



Building Communities, Creating Connections, Supporting Commerce

610.326.2900
 WWW.TRICOUNTYAREACHAMBER.COM
 152 E. High St. Suite 200, Pottstown, PA 19464



#TCACCBETTERTOGETHER #WHYTCACC

MEMBER ANNIVERSARIES

Happy Anniversary to the following Members!

41+ Years

The Body-Borneman Companies

25 Years

MACnificent Pages /
Route 422 Business Advisor

5 Years

Dana Incorporated

1 Year

E. Kenneth Nyce Law Office

RDTeam

Dischell, Bartle & Dooley, P.C.

Marathon Capital Advisors

Nuage Logic Inc.

Acupuncture on Hanover

Boyertown Area Multi-Service -
The Rickett's Center

Plus 1 Technology

Visit the NEW
www.TriCountyAreaChamber.com

Featuring an even better design and easier navigation for you to access important information and resources for you and your business.

BUILDING COMMUNITIES



By Eileen Dautrich, TCACC President

Continuing my message from last month, we have several things we want to share with you. A vote was recently taken to make the following modifications to our mission and vision statements to effectively define our purpose going forward:

Our New Mission - Leveraging the power of Membership to provide valued membership services and proactive leadership for the tri-county region.

New Vision - The tri-county area has a strong sense of place - quality of life, economic opportunity, and generations of leaders - to support the region's businesses and communities.

In addition, the TriCounty Area Chamber of Commerce Board of Directors has adopted the following values that guide our work:

Integrity - good fiscal stewardship, ethical decision-making, transparency in all matters.

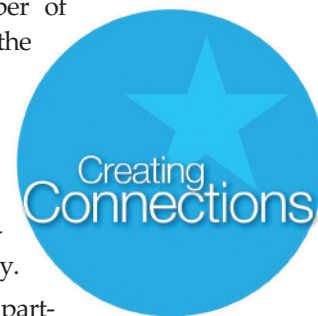
Leadership - build and maintain a positive business environment, practice servant leadership, accept accountability and embrace diversity.

Progress - create community and regional partnerships, achieve goal alignment, pursuit of increasing investor value, and adaptability to an ever-changing marketplace.

In last month's article, I discussed the 3 Cornerstones of the TriCounty Chamber: Building Communities, Creating Connections, and Supporting Commerce. Over the next few months of our 2020-2021 program year, we will be designing programs and services focused on defining us as a compelling and convening organization as targeted in the 3 Chamber Cornerstones.

As part of our Building Communities Cornerstone, the Chamber provides pro-business leadership to enhance economic opportunity and quality of life in the tri-county region through strategic partnerships. You contribute to the Chamber realizing its vision and we will:

- Continue to share information and access to resources that will benefit our Members
- Continue to stay connected and asking Members what needs they have, responding to those needs by matching them with resources to help them succeed
- Expand Chamber's community involvement - educating and connecting Members to community assets



Here's to growing in 2021!

REGIONAL CHAMBER ROUNDUP

UPCOMING EVENTS

Mark your calendars - we have lots of great events happening this month!

For more details and to register for any of these events, please visit our events calendar at www.tricountyreachchamber.com/events or call 610.326.2900.

Member Meet-Up and Check-In | Tuesday, April 6
10 - 11AM | Free to TCACC Members Only

REACH Coffee Chat | Tuesday, April 13
10 - 11AM | Free to TCACC Members and Non-Members

Member Meet-Up and Check-In | Wednesday, April 14
10 - 11AM | Free to TCACC Members Only

Membership Breakfast: Driving Growth in 2021 with Mark Miller of Flywheel LLC | Wednesday, April 21
8:30 - 10AM | \$15 per TCACC Member; \$30 per Non-Member

REACH Coffee Chat | Tuesday, April 27
10 - 11AM | Free to TCACC Members and Non-Members

Maximize Your Membership | Thursday, April 29
9 - 10AM | Free to TCACC Members Only

SAVE THE DATE: REACH Half-Day Conference
Tuesday, June 29

THANK YOU TO OUR 2021 MISSION & VISION PARTNERS (MVPS)

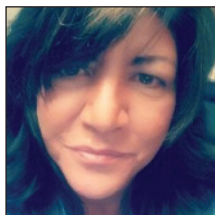


REACH: EMPOWERING AND CONNECTING WOMEN

Our women's program, **REACH: Empowering and Connecting Women**, continues to grow and thrive since its official rebrand and launch in June 2019. The program has grown to hosting biweekly Coffee Chats for the group to connect and build relationships bimonthly luncheons with incredible speakers, an active and engaged private Facebook group for sharing inspiration and celebrating accomplishments. Thank you to members of the REACH community who have shared their experiences with the program and how it has impacted them, both personally and professionally.

"I feel like I have always discovered a new mentor or community partner through my involvement in the Chamber's REACH Coffee Chat. They are informative, supportive, and everyone has a great sense of humor and sense of purpose."

— Liz Peters, Business Development at Tri County Area Federal Credit Union



"I am blown away by the genuine connections I've made through REACH. The women I've met through this group have inspired me in many ways but have also supported me – in my personal life, my volunteer life,

and my professional life. Working in a male-dominated industry, I've been lucky enough to find a solid group of women that can keep me grounded when I need to be, and lift me up when I need it too."

— Tammy Dahms, Director of Corporate Sales & Sponsorship, Santander Arena | Reading Royals



"No other support program has come close to the REACH Coffee Chat. Since I have joined the group, I have received tremendous support and direction from generous, intelligent, and compassionate professionals. The discussions we have are very relevant to work as well as personal life balance. The networks are supportive and provide a sense of growth and opportunity even within our small circle. We have a lot to offer one another and REACH is true to its commitment to helping business owners achieve positive results. I am always able to discover new information at the meetings and look forward to our gatherings and working closely to support those community organizations that strive to further develop the economic construct needed to position our region for success in these challenging times."

— Shona Levy, Founder of 360! For Life! Holistic Health Coaching Services

