



**EVERYTHING PRINTING**

NEW LOCATION: 1145 E Philadelphia Ave • Gilbertsville



Digital Print & Copy Center  
Postcards & Brochures  
Signs & Banners  
Posters & Fliers  
Fulfillment  
Mailings

(610) 367-7444 • [EverythingPrinting.com](http://EverythingPrinting.com)

## Arcadia at Limerick Pointe

Montgomery County's newest retirement community, Arcadia at Limerick Pointe, is set to open in Fall of 2020. Defying the cookie cutter approach to senior living, Arcadia is defining the future by offering an innovative community based on faith and family.



Arcadia will be the only true Independent living community in the Limerick area offering luxury and outstanding amenities as a rental concept without large buy in fees. A \$50.1 million project, Arcadia will offer the full continuum of care with 160 Independent Living, Personal Care, and Memory Care apartments. Arcadia is close to 200,000 square feet, and there is a growing wait list of individuals who are ready to make this community their home.

*"We believe that our family culture is what deeply resonates with our senior residents and their families. It has been the cornerstone of our philosophy for 25 years. Anyone making the decision to live or work in our communities will find our community to be special in its commitment to care and holding close the importance of individual integrity and respect."*

Developed by Vantage Point Retirement Living, a family-owned and operated organization, Arcadia was born out of the belief that seniors deserve more when it comes to senior living and reflects the core values of principles Greg and Rita Stevens.

Vantage Point's acclaimed and trademarked "Compass Memory Care" neighborhood reflects the passion of Rita Stevens who oversees every aspect of creating an environment designed to promote the best quality of life for the residents who will call Arcadia home.

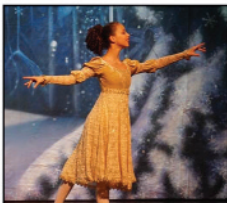
*(Continued on page 20)*

### Pottstown Dance Theatre Fall Hybrid Lessons: Half on Zoom and Half in Person!

Open House for NEW students will be by appointment on Sat. 8/29 from 12noon to 7pm as well as Wednesday 9/2 from 5-8pm.

Returning students need to mail in registration forms!

Call 610-323-2569 or visit [www.pottstowndance.com](http://www.pottstowndance.com) for details.



**Pottstown Dance Theatre**  
Michelle Jones Wurtz, Director  
610-323-2569  
72 W. Main St., Pottstown PA 19465  
[www.pottstowndance.com](http://www.pottstowndance.com)

*Want to dance with professional dancers with international experience? How about at a school that performed in Europe? You'll make friendships that will last!*



**VALLEY FORGE**  
TOURISM & CONVENTION BOARD

2020  
**#MAKEITMONTCO**  
HOTEL PACKAGE

**BOOK YOUR GETAWAY IN MONTGOMERY COUNTY, PA TO RECEIVE OVER \$300 IN EXCLUSIVE OFFERS!**

This summer and fall, change your scenery. Experience Valley Forge and Montgomery County, where there's room to stay, and space to play while safely social distancing.

Stays from now to December 31, 2020, and upon check-in at a Montgomery County hotel, receive an exclusive #MakeItMontco digital coupon booklet via the **Visit Valley Forge App** valued at over \$300.

### RECEIVE PREMIUM OFFERS FOR

- Dining
- Breweries
- Distilleries
- Wineries
- Shopping
- and more!



[makeitmontco.com](http://makeitmontco.com)



**NOW LEASING!**  
**Apartments**  
**are reserving**  
**quickly!**

Call for more information about  
 our pre-opening incentives!  
 610-981-1688

[www.arcadialife.com](http://www.arcadialife.com)

**KIM KOSTIVAL,**  
 YOUR INDEPENDENT LIVING EXPERT



**ROSE ANNE KLEMENTISZ,**  
 YOUR PERSONAL CARE  
 AND COMPASS MEMORY  
 CARE EXPERT

We can't wait to

*Welcome You*  
*Home*  
 when we open this fall!

**- Now Reserving All Levels of Care -**  
**Independent Living, Personal Care, Memory Care**

Set to open this Fall, Arcadia is the area's premier destination for active seniors who are seeking the worry-free lifestyle they want, deserve, and have earned.

Whether you're looking for a vibrant and exciting independent living apartment for yourself or an equally vibrant and exceptionally caring personal or memory care apartment for a loved one

**- we can't wait to meet you!**

Especially now, nothing is more comforting than being surrounded by family - and that is exactly what you can expect from us when we open in just a few months.

We're a family owned organization with a culture based on a belief that a lifestyle community is more than just a place to live. It's a place to love, to thrive, to enjoy, to improve, to celebrate, to laugh, to cry, and to do it together **- just like family.**



**NOW OPEN!**



Serving elegant dinners Wednesday – Saturday  
 Reservations Preferred • Catering Available  
 215-541-2250 • [meritagebistro.com](http://meritagebistro.com)  
 914 Gravel Pike • Palm, PA 18070

**ARCADIA AT LIMERICK POINTE**

*(Continued from page 19)*

Arcadia is building an amazing team of over 100 like-minded employees whose approach to their positions will be cultivated in kindness, transparency, and innovative thinking. Executive Director Karen Garland will be leading the way towards realizing that vision for all areas of living at Arcadia.

She explains, "My emphasis will be to select caring staff and train them in customer service. As our staff becomes a part of your daily life, you will be comforted in knowing that they understand your personal needs and be trained to anticipate how to support you. The warmth and love shared throughout your time at Arcadia, will be like one's own family where laughter, support, understanding, and empathy shall always be present."

Arcadia at Limerick Pointe also enjoys a unique affiliation with St. Teresa of Calcutta, delivering comprehensive faith-based programming within the retirement community – regardless of denomination – to satisfy our very human need to connect spiritually.

Father Brandt, founding Pastor of St. Teresa's, says, "If a resident has a basis of faith and spirituality, it can be strengthened easily in an environment like Arcadia. It promises to be a space where spirituality and faith can become a focus and does not need to be divisive but inclusive, being able to find what they have in common and to share that experience."



This pioneering combination of faith-based family values and modern quality of life defines the foundation of Arcadia. For more information please visit us at [www.arcadialife.com](http://www.arcadialife.com) or reach out to [team@arcadialife.com](mailto:team@arcadialife.com). Arcadia at Limerick Pointe is located at 51 West Arcadia Drive, Limerick PA near the intersections of Ridge Pike and Lewis Road.