



Leveraging the power of membership to grow and strengthen our community, our businesses, and our future leaders.

TCACC Mission: *As the primary business advocate, the TriCounty Area Chamber of Commerce provides relevant membership services and proactive leadership to enhance economic opportunity and quality of life within our region.*

Table of Contents

President's Message	29
Calendar of Events.....	34
End of Chamber Section	34
Leadership Tri-County	35

CONNECT WITH YOUR TRICOUNTY AREA CHAMBER:

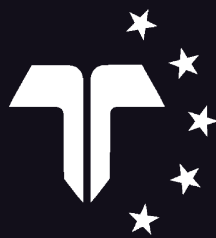
152 E. High St., Suite 200,
Pottstown, PA 19464
• TEL: 610.326.2900

Eileen Dautrich, President,
eileen@tricityareachamber.com

Gregory Glenn, Member Relations Director,
gregory@tricityareachamber.com

Danielle Rexrode,
Marketing & Communications Director,
danielle@tricityareachamber.com

Melissa Shainline, Administrative &
Member Services Director,
melissa@tricityareachamber.com



TRICOUNTY AREA CHAMBER OF COMMERCE

PRESIDENT'S MESSAGE



October of 1999 was the first issue of the *Route 422 Business Advisor* serving as the official newsmagazine of the TriCounty Area Chamber of Commerce. Over the last 21 years the layout has changed, the faces in the event pictures have changed, the staff working on the publication have changed, but our partnership with Bill Haley and his publication remained and adapted when necessary over the years.

To all of you who have been advertisers over the last 21 years - thank you! Your support has enabled us to share our message with a larger audience. You have been an important part of the process.

The *Business Advisor* was a successful publication in 1999 and had a distribution of 10,000 businesses along the Rt. 422 Corridor and partnering with the publication provided our Chamber with a way of sharing our story that we could not accomplish alone.

We value the opportunity that Bill Haley and his publication have provided but the Chamber is making some tough decisions and making some changes. This will be our last issue where the Chamber has a full seven pages of content. We will have a one page update along with our neighboring chambers in the region and we will provide the monthly update that the *Rt. 422* provided through Chamber Chat. Stay tuned for details on the start of Season 3 of Chamber Chat!

Through Bill's mailing list you will continue to receive the publication and benefit from the informative articles that industry experts provide and we encourage you to continue to support the publication and take advantage of the advertising opportunity it provides to reach a key business audience.

The changes for the Chamber continue. We are moving! The week of July 20th the Chamber moved to its new home at Suite 200 of our current building. Turn the page to see pictures of the accumulation of 15 years of stuff and photos of our new office. Watch social media for pictures as we move into Suite 200 and share with you the new spaces set up and ready to go to continue to provide you with a full slate of member benefits and new ones to come.

Again, one more huge THANK YOU to Bill Haley!!



OCTOBER 1999



OCTOBER 2017

WE ARE BETTER TOGETHER!

We are moving!

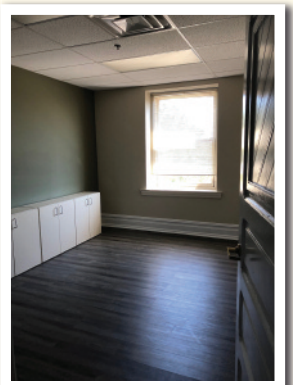
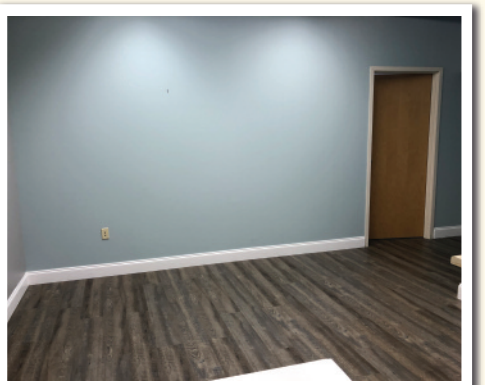
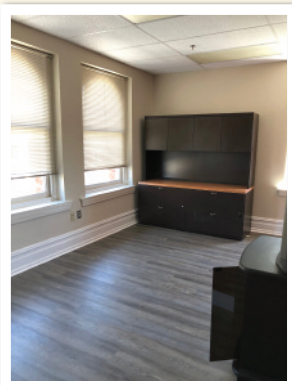
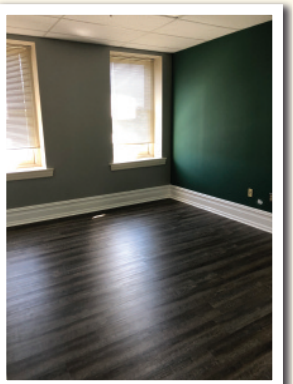
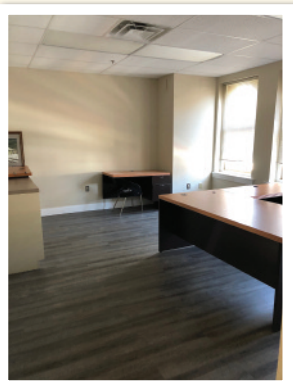
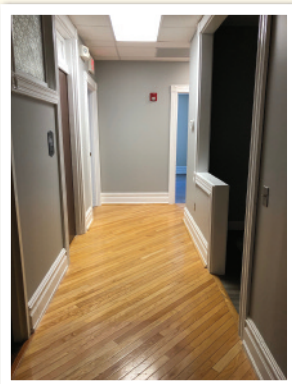
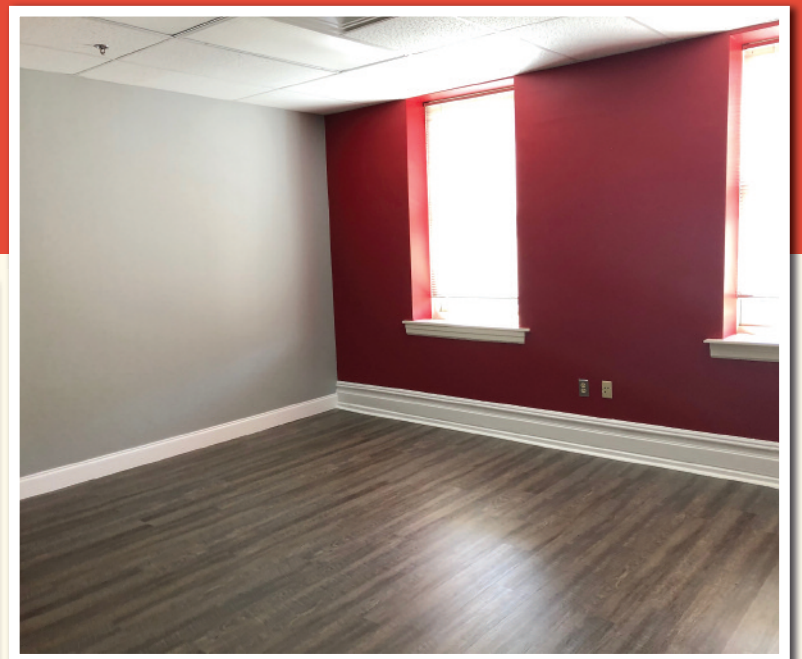
The Chamber moved to 152 East High Street in 2005.

We have accumulated quite a pile of stuff over our 15 years in our space.

Check out the conference room as we organize our existing stuff to relocate it to the 2nd floor.



*Here are some pics of our new space...
We are excited and we look forward to showing it to you!*



MAKING A DIFFERENCE IS WHAT WE DO!

WELCOME APPROVED NEW MEMBERS!

Congratulations to the businesses listed below. Their applications were approved by the Board of Directors in June and July.

Arcadia at Limerick Pointe
51 West Arcadia Drive
Limerick, PA 19468
610.981.1904
www.arcadialife.com

Retirement Communities

Arcadia is a unique, family, and locally owned Senior Living Community located in the heart of Limerick. We offer Independent, Personal Care and Memory Care apartments on a monthly-rental basis, no large buy-ins. This allows seniors, at Arcadia, to keep control of their assets while enjoying a vibrant quality of life.

Underdog Catering
26 North Charlotte Street
Pottstown, PA 19464
610.207.0994

www.facebook.com/Theunderdog610
Food Products; Food Products – Specialty; Restaurants

ZenBusiness
702 San Antonio Street
Austin, TX 78701
844.493.6249

www.zenbusiness.com/form-llc/pennsylvania

Business Consultants

ZenBusiness makes it easy to start, run & grow your business.

5 Ways Your Customers Win with You as a Chamber Member

Did you know that **your customers receive multiple benefits from you being a chamber member** and those benefits can increase their loyalty? Here are 5 examples:

- 1. You're in the Know** - When you're a member of the chamber you know what's going on in the business community.
- 2. You Have Inside Knowledge (and Tickets) for Events** - As a member, you may be able to purchase tickets earlier or bring an interested guest - **you come off looking like a rock star to your customer or vendor.**
- 3. You Know About Legislative Initiatives** - The chamber is busy working behind the scenes for all businesses in your area.
- 4. You Become a Resource** - You become a connector in the community and someone they patronize to get the inside scoop.
- 5. You Hire the Best** - As a chamber member, you get to meet a wide variety of people and expand not only your sales networking but your career network as well.



TRICOUNTY AREA CHAMBER OF COMMERCE

CHAMBER MEMBERSHIP ANNIVERSARIES MAY–AUGUST (ACCORDING TO TCACC RECORDS)

Happy Anniversary to the following Members:

30 YEARS
Borough of Boyertown
Klein Transportation
Reading Fightin Phils

20 YEARS
Chestnut Knoll

15 YEARS
JWM Business Services
Patriot Environmental Management, LLC
Rhoads Limousine Service, Inc.

10 YEARS
Clothes To Home, LLC
Comcast
Falco and Associates, Inc.

5 YEARS
Barbara A. Akins, CPA
Ches-Mont Carpet One

When purchasing goods and services, please keep these businesses as well as other TriCounty Area Chamber of Commerce Members in mind while you



Always Buy Chamber!

MEMBER RENEWALS: FEBRUARY–MAY

*Thank you to the following Members who renewed their commitment, to make your Chamber a **PRIORITY!***

- | | | |
|---|---|---|
| <u>1031 CORP.</u> | <u>P. Richard Frantz, A.I.A., Architect</u> | <u>Pottstown United Brewing Company</u> |
| <u>422 Business Center</u> | <u>Frederick Living</u> | <u>Reading Foundry & Supply Co.</u> |
| <u>A. Jackson Ecker, Inc.</u> | <u>Freestyle Real Estate, LLC</u> | <u>Reading Site Contractors</u> |
| <u>Allegheny East Conference of Seventh-day Adventists</u> | <u>Fulton Bank</u> | <u>Realty One Group Restore</u> |
| <u>Alvernia University</u> | <u>Gerhart, Hartman & Ritner Insurance Agency</u> | <u>Red Horse Motoring Club</u> |
| <u>Amy's Upcycles, LLC</u> | <u>Gilmore & Associates, Inc.</u> | <u>Redevelopment Authority of Montgomery County</u> |
| <u>ARCpoint Labs of King of Prussia</u> | <u>Glass Slipper Concierge</u> | <u>Richard A. Zuber Insurance Agency</u> |
| <u>Bally Spring Inn</u> | <u>Global Advanced Metals</u> | <u>Rutter Roofing</u> |
| <u>Barry Isett & Associates, Inc.</u> | <u>Greater Pottstown Tennis & Learning</u> | <u>Sanatoga Water Conditioning, Inc.</u> |
| <u>Bause Catered Events</u> | <u>Herb Real Estate, Inc.</u> | <u>Santander Arena & Performing Arts Center</u> |
| <u>Berks Career and Technology Center</u> | <u>Herbein + Company</u> | <u>Schuylkill Holdings</u> |
| <u>Berks County Abstract Company</u> | <u>Heritage Coach Company, Inc.</u> | <u>Schuylkill River Greenways National Heritage Area</u> |
| <u>Bethel Community Church of Pottstown</u> | <u>Jesse Baro, Inc.</u> | <u>Scott A. Weller Carpentry & Cabinets, Inc. dba Solar By Weller</u> |
| <u>Blatt Construction</u> | <u>Judson A. Smith Co.</u> | <u>Speck's Drive In</u> |
| <u>Boyertown Oil and Propane</u> | <u>Kreischer Miller</u> | <u>Splitting Edge Axe Throwing</u> |
| <u>C. David Hollenbach Plumbing & Heating, LLC</u> | <u>Lindt Chocolate</u> | <u>Spring Ford Country Club</u> |
| <u>C. Raymond Davis & Sons, Inc.</u> | <u>Meridian Bank</u> | <u>Superior Credit Union</u> |
| <u>Cappelletti Pinter & Company, P.C.</u> | <u>Mom's House, Inc. of Greater Philadelphia</u> | <u>Synergy Environmental, Inc.</u> |
| <u>CEDARVILLE Engineering Group, LLC</u> | <u>Montgomery County Intermediate Unit</u> | <u>The Body-Borneman Companies</u> |
| <u>Ches-Mont Carpet One</u> | <u>NAMI Montgomery County PA</u> | <u>The Salvation Army</u> |
| <u>Clark Industrial Supply</u> | <u>Norco Fire Company</u> | <u>The Victory Bank</u> |
| <u>CODY Systems</u> | <u>Owen J. Roberts School District</u> | <u>Tompkins Insurance</u> |
| <u>CzarStar Security</u> | <u>PA Industrial Equipment, Inc.</u> | <u>Tornetta's Italian Restaurant</u> |
| <u>D. G. March and Associates/Enviromat Company, Inc.</u> | <u>Patriot Environmental Management, LLC</u> | <u>Traffic Planning and Design, Inc.</u> |
| <u>D.E.C. - Pottstown Training Center</u> | <u>PECO</u> | <u>Translogistics, Inc.</u> |
| <u>Dana Incorporated</u> | <u>Penn Foundation, Inc.</u> | <u>VFC</u> |
| <u>Eagle Microsystems, Inc.</u> | <u>Physicians Care Surgical Hospital</u> | <u>Village Architecture & Preservation</u> |
| <u>eb Logix, Inc</u> | <u>Pixel OutDoor</u> | <u>Wheels In Motion</u> |
| <u>Edward Jones - Bonnie L. Thompson, Financial Advisor</u> | <u>PMA Medical Specialists - Limerick</u> | <u>Wolf, Baldwin & Associates, PC</u> |
| <u>Edwards Business Systems</u> | <u>Pottstown Area Rapid Transit, Inc. (PART)</u> | <u>Yucha Medical Pain Management & Chiropractic Rehabilitation</u> |
| <u>Family Services of Montgomery County</u> | <u>Pottstown Athletic Club</u> | |
| <u>Fleetwood Bank</u> | <u>Pottstown Cluster of Religious Communities</u> | |
| <u>Foundation for Pottstown Education</u> | <u>Pottstown Hospital Tower Health</u> | |
| | <u>Pottstown Regional Public Library</u> | |
| | <u>Pottstown Roller Mills, Inc.</u> | |

WE ARE BETTER TOGETHER!

THANK YOU TO OUR 2019-2020 SPONSORS

SIGNATURE PARTNER



Pottstown Hospital

TOWER HEALTH

Advancing Health. Transforming Lives.

COMMUNITY PARTNERS



CONNECTIONS PARTNERS



COMMERCE PARTNERS



BUILDING COMMUNITIES - CREATING CONNECTIONS - SUPPORTING COMMERCE

WE ARE BETTER TOGETHER!

EXPOSURE



AS A MEMBER, THE CHAMBER OFFERS YOU A WIDE VARIETY OF RESOURCES AND OPPORTUNITIES TO BOOST EXPOSURE AND AWARENESS FOR YOUR BUSINESS.

SHOW OFF YOUR MEMBERSHIP

- Proudly display your membership plaque and decal in your business to let customers know you support your local community through your Membership.
- Put the Chamber logo on your business's website, social media pages, email footers, etc.



SOCIAL MEDIA

- Tag the Chamber in your business's social media posts so that we can share them and help you reach a new audience.

Follow us on:    

- To tag us, type "@" then begin to type "TriCounty Area Chamber of Commerce". A dropdown menu should appear that displays our page.
 - Tagging us in a post ensures that we see it and can engage with you.

CHAMBER WEBSITE

- Use the Member Information Center (MIC) to post job listings, submit press releases, and put events on our Community Calendar, all of which are visible on our website to both the Chamber community and the public.
- Your business, including your logo, address, contact information, and website, is listed in the Chamber's online Member Directory. Make sure your information is correct- it can be edited using the MIC. Enhanced website listings are also available!

CHAMBER CHAT PODCAST

- Be a guest on the Chamber's exclusive podcast!
- Share the story of your own professional career or your business's journey.



CHAMBER LOBBY DISPLAYS

- Members can display the following in our lobby:
 - Business cards
 - Brochures/flyers for your business
 - Event flyers on our Chamber & Community Events bulletin board

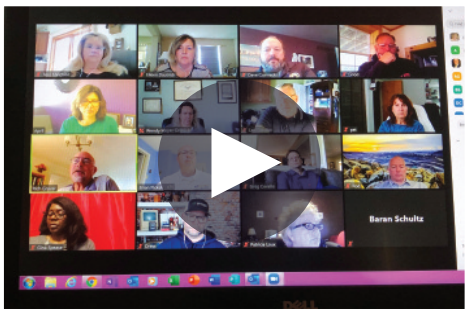
OTHER OPPORTUNITIES

- Sponsorship of events, Chamber Chat, etc.
- Ribbon cuttings for:
 - Openings of new locations
 - Newly renovated buildings/office space
 - New major equipment
- Plus - we only refer Chamber Members!

FOR QUESTIONS OR MORE INFORMATION, CALL 610.326.2900 OR VISIT WWW.TRICOUNTYAREACHAMBER.COM.

WE ARE BETTER TOGETHER!

RECORDINGS OF PREVIOUS VIRTUAL SEMINARS



- May 13, "The Power of Positive Attitude"

- June 10, PA Chamber Update

- June 11, Paycheck Protection Program Loan Forgiveness

- June 24, REACH Virtual Panel – "Strive, Grow, and Thrive"

Scanning this QR code will take you to the Seminar Recordings page.



or, visit <http://www.tricountyareachamber.com/annual-events---networking/refresh-fridays/>

LEADERCAST

Leadercast

POSITIVE DISRUPTION

Leadercast 2020 was held virtually this year.

Stay tuned...the Chamber will be offering virtual re-broadcast sessions of the 9 speakers!

Details on dates, times, pricing, etc. to come.



Stay tuned for fall events – rescheduled July presentations and virtual networking opportunities!

FOLLOW US!

TriCounty Area Chamber of Commerce

tricountyareachamber

TriCounty Area Chamber of Commerce



BETTER TOGETHER.

JOIN OUR COMMUNITY OF 560+ BUSINESSES IN THE TRI-COUNTY REGION.

Contact Gregory Glenn, Member Relations Director
gregory@tricountyareachamber.com - 610.326.2900

www.tricountyareachamber.com



#tcaccbettertogether

Montgomery County, Pennsylvania COMMERCE DEPARTMENT

#MontcoForward

For entrepreneurs, businesses, & investors in or considering Montgomery County, our Commerce Department can connect you to tools, services, & partners that will help you start, grow, or move here.

Workforce Training & Recruitment Resources



Economic Development Financing Tools

Redevelopment & Remediation Expertise



Local, County, & Regional Government Connections

Guidance & Advice



Site & Location Information

Contact: Amy B. Lempert, Administrator, Business Assistance & Resources
ALempert@MontcoPA.org

Montgomery County Commerce Department
David Zellers, Jr., Director
MontcoPA.org/Commerce
MontcoForward.org
@MontcoCommerce

MONTCO FORWARD
MONTGOMERY COUNTY, PENNSYLVANIA

WE ARE BETTER TOGETHER!



WHO WE ARE

Tri-County Young Professionals is a program for professionals ages 21-40 working in the tri-county area of Berks, Chester, and Montgomery Counties. We are a diverse group of ambitious, visionary young minds from a variety of industries and backgrounds coming together to connect, develop as professionals, and give back to the community.

WHO SHOULD JOIN?

We welcome ALL young professionals ages 21-40 who work in the tri-county region of Berks, Chester, and Montgomery counties. All industries and professions are welcome!

TRI-COUNTY YOUNG PROFESSIONALS

PRESENTED BY LEADERSHIP TRI-COUNTY



ANNUAL DUES: \$35 PER PERSON

Annual Dues Include:

- Access to a network of young professionals from Berks, Montgomery, and Chester counties
- Volunteer opportunities to give back to your community
- Social networking events
- Professional development opportunities
- Free access to Refresh Friday seminars: monthly educational seminars presented by Leadership Tri-County
- Discounted tickets to select TriCounty Area Chamber of Commerce events

JOIN US TODAY TO CONNECT, GROW, AND MAKE AN IMPACT.

www.leadershiptricity.org/young-professionals
610.326.2900



For questions or more information, contact:
Danielle Rexrode
Marketing & Communications Director
danielle@tricityareachamber.com

NETWORK OF LEADERS
-
PROFESSIONAL DEVELOPMENT
-
VOLUNTEERISM
-
COMMUNITY ACTION

WE ARE BETTER TOGETHER!