

FOCUS ON SUCCESSFUL ENGINEERING FIRMS

CELEBRATING NATIONAL ENGINEER'S WEEK - FEBRUARY 16-22

McCarthy Engineering Associates Inc.

McCarthy Engineering Associates, Inc., with offices in Wyomissing and Boyertown, is proud to be celebrating our 20-year anniversary as a multidisciplinary engineering, consulting, planning, and environmental services firm. We provide services to industrial, commercial, health care, educational, governmental, and residential clients throughout the Northeast United States. The firm's capabilities range from civil engineering, land development, structural design, water resource management, surveying and mapping to mechanical engineering, plumbing design, electrical engineering, and fire protection design.

Owner Jim McCarthy incorporated the business in June 2000 with a vision to create a different kind of engineering firm; now McCarthy combines the latest technologies, the most knowledgeable associates and out-of-the-box problem solving to complete client projects. Mc-

Carthy offers its clients a professional team that includes engineers, surveyors and designers, many of whom have more than 30 years of individual experience in their areas of expertise.

This knowledge has directly resulted in highly satisfied clients and hundreds of successful projects. Our strength is found in our team members' knowledge and desire to provide timely and high-quality service; this is the strong foundation upon which the company is built. The high ratio of repeat business can be attributed to our philosophy of doing things right the first time on time! If completing your upcoming project on budget and on time is a priority, McCarthy Engineering is your design partner.

McCarthy Engineering Associates, Inc. is headquartered at 555 Van Reed Road, Wyomissing, PA 19610; Phone: 610.373.8001; Web: www.mccarthy-engineering.com.



CELEBRATING OUR
20TH ANNIVERSARY

CENTRALIZE RESPONSIBILITY & ACCOUNTABILITY

CIVIL-SITE | MECHANICAL-HVAC | ELECTRICAL
WATER RESOURCE | PLUMBING | ENVIRONMENTAL
GOVERNMENT & MUNICIPAL | LAND SURVEYING

START YOUR PROJECT TODAY!

LOCATIONS IN BOYERTOWN & WYOMISSING
WWW.MCCARTHY-ENGINEERING.COM
610.373.8001

Full-Service Provider of Transmission and Distribution Engineering and Design

RENEWABLE ENERGY – Wind and Solar studies, utility integrations, balance of plant

SUBSTATION – Concept Design and Studies, Electrical/Physical, Civil/Structural, Protection & Control, Gas Insulated Substations, Project Management, Procurement, Construction Management

TRANSMISSION and DISTRIBUTION – Line Ratings, Reconductoring, Route Selection, Condition Assessment, Civil Design, Overhead and Underground Distribution, Structural Analysis, Construction Layout, Environmental Services, Power Outage Planning, Permitting Services



www.subengco.com

6 Commerce Drive
Reading, PA 19607

For more information
reach out to John Klein at
jaklein@subengco.com



Substation Engineering Company

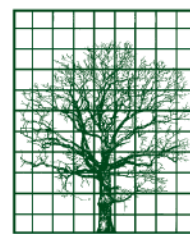
Substation Engineering Company (SECo) is a full-service provider of engineering and design service for electric utility high voltage substation, transmission and distribution projects.

With our main office located in Reading, we strive to be the engineer of choice for our local utilities as well as other utilities located in the Northeast and Mid-Atlantic Regions. Our capabilities extend from Conceptual Design and studies to

In-Service Delivery on projects for Substations, Gas Insulated Substation (GIS), Transmission, Distribution and Renewables ranging from 4kV-500kV.

Our very experienced staff provides excellent value for the complicated projects. We emphasize safety, partnership and teamwork to facilitate the best service for our customers.

For additional information please call 610.603.5445.



Established 1975

LUDGATE ENGINEERING CORPORATION

ENGINEERS ♦ SURVEYORS ♦ LAND PLANNERS

P: (888) 646-6161 F: (610) 404-7371
www.ludgate-eng.com

The First Call is Always to All County and Associates

- Civil Engineering
- Environmental Permitting
- Flood Elevation Certificates
- Sewage System Designs
- Land Development Plans
- Subdivision Plans
- Property Surveys
- Feasibility Studies
- Sewage System Inspections



www.all-county-assoc.com

Helping you make better informed decisions.
Experience • Knowledge • Innovation



RE/MAX OF READING **PREFERRED** **VENDOR**

Call Andrew Kearney
610-469-3830

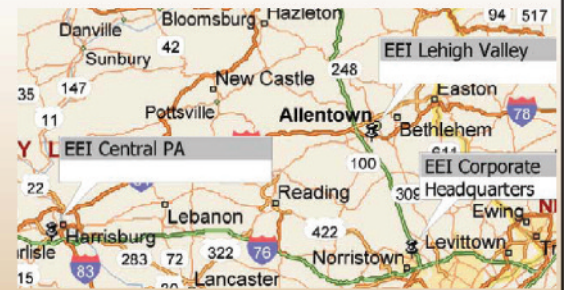
Serving Berks Bucks, Chester, Delaware & Montgomery Counties Since 1992



EARTH ENGINEERING INCORPORATED

Geotechnical Engineers & Geologists

We've Got The 422 Region Covered!



- Subsurface Investigations
- Construction Inspection and Testing
- Geotechnical Design & Analysis
- Clean Fill Testing
- Stormwater Infiltration Testing
- Laboratory Soils Testing
- Carbonate Site Assessments
- Environmental Site Assessments and Remediation

www.earthengineering.com

Corporate Headquarters: 610-277-0880

Central PA: 717-697-5701

Lehigh Valley: 610-967-4540

South Jersey: 856-768-1001

QUALITY * COMMITMENT * PERFORMANCE

Aftan Engineering, LLC

Are your operations running flawlessly? If not, we can help. Aftan Engineering, LLC has been providing custom solutions to manufacturing problems since 1996. The company provides custom automation and ergonomic solutions to help companies improve process cycle times, improve product yields, make jobs safer for their employees, and reduce workers' compensation insurance costs. The company also provides Lean Six Sigma consulting service, driving continuous and breakthrough improvements in yield, cycle time, customer satisfaction, cost and numerous other corporate key performance indicators. 3D printing and additive manufacturing is available for rapid prototyping, jigs, fixtures, models and small volume production.

Another focus area for Aftan Engineering is environmental assessment and management. Aftan Engineering provides Life Cycle Assessment (LCA) and Environmental Footprint analysis to



support companies in comparing design options for environmental impact, documenting environmental performance for marketing and company reports, and providing evidence of life cycle thinking for ISO 14001 compliance. For companies interested in pursuing ISO 14001:2015 certification, Aftan provides support for implementation of an environmental management system and preparation for audits to the standard. Water line leak detection is available for locating a broken or cracked pipe even under concrete or asphalt, thereby reducing the necessary excavation, speeding repair, and minimizing cost.

Our mission is to help companies of all sizes and industries achieve sustainable solutions through economic, environmental and social improvements. When you are ready for breakthrough improvements in your operation, call 610.914.1356 or visit www.aftansustainability.com.



AFTAN ENGINEERING

Environmental Footprint/LCA/LCC

ISO 14001 Implementation

Lean Six Sigma Process Improvements

Custom Ergonomic Solutions

610-914-1356

www.aftansustainability.com

FOCUS ON SUCCESSFUL ENGINEERING FIRMS

CELEBRATING NATIONAL ENGINEER'S WEEK - FEBRUARY 16-22



Tier 1 Utility Design, Inc.

Tier 1 Utility Design, Inc. is a woman owned full-service Engineering and Design firm owned by Jeanne Klein. The company was established in 2015 and since 2016 has been providing engineering, design, and construction management support for Transmission and Distribution projects for electric utilities.

Our mission is to be the choice provider for Electric Utilities for Design Engineering Services by meeting and exceeding the needs of our customers. We strive for continual improvement in our production to our clients. This is accomplished through our team mentoring approach. We emphasize safety, collaboration and value-added engineering to facilitate the best quality for our customers.

Our dedicated staff utilize the latest technology and software providing services on Conceptual, Basic and Detailed Engineering packages for Utility and Developer Clients. Our capabilities range from brownfield or greenfield substation projects, overhead and underground transmission and distribution as well as support for Renewable Energy Systems.

For additional information, please call Jeanne Klein at 610.603.5445, email: jklein@t1utilitydesign.com; and visit www.t1utilitydesign.com.

Creative Health Services Renovations Designed by P. Richard Frantz, AIA

Creative Health Services is Pottstown's community behavioral health center helping more than 6000 children, adults and families improve their lives every year. The recently completed construction renovations on an existing steel building located at 71 Robinson Street in Pottstown has made the new ELTSR a reality. Creative Health has adapted the former Palladino Roofing Company shop and office building into a residence for twelve individuals in recovery. The project, designed by P. Richard Frantz, A.I.A., longtime Pottstown architect, transformed the existing building comprised of 8400 square feet into a facility now housing offices, living areas, activity spaces, residential bedrooms, a laundry area, dining room and kitchen. A small cottage was constructed on the site to house four additional residents.

The site transformation from a large paved parking and service area to a beautifully landscaped courtyard with a gazebo, basketball half court, plantings, and hard-scaped walkways is breathtaking. Dr. Andrew Trentacoste, Creative Health's CEO and Clinical Director said the ELTSR was designed to provide a warm and friendly atmosphere for the residents and staff. "Good design is critical to successful outcomes. Because of this we were able to a beautiful and innovative residential treatment facility," he added.

A railroad motif is central to the design as the Colebrookdale Railroad runs along the eastern property line. Railroad memorabilia and train photographs decorate the interior including a large "O" gauge model



railroad layout in the upper floor office area. Two trains travel through a village complete with models of the current Creative Health office building at 11 Robinson Street and the former High Street Town Toy building, which served as Creative Health's home for several years. As the train exits the platform layout and travels through a portal into the two-story high activity room, it loops and crosses an eight-foot-wide steel arched bridge and returns to the platform through another portal. A system of tunable LED lighting installed throughout the building allows for color and intensity adjustment of the lights to create different "mood environments" for the residents.

Aiding in the design and construction of the project engineers providing professional design services were Pottstown consultants Thomas L. Zeigler, P.E., structural engineer; IVD Engineering, plumbing, HVAC, and electrical systems engineers; and Bursich Associates, site engineers. Hollenbach Construction, Inc., Boyertown was the General Contractor. Gehring Mechanical, Inc., Boyertown installed the plumbing, HVAC, and electrical systems. Hollenbach constructed the original building in 1986.

The Creative Health staff meets with people at their many campuses, in schools, homes and community settings. Our services are designed to help people overcome

Diversity in Engineering

Certified Woman Owned Business dedicated to providing exceptional service to the Transmission and Distribution Utility Industry

Full-Service Transmission and Distribution Engineering Company providing quality engineering, design, drafting and construction management services to Electric Utilities and Renewable Developers. We are dedicated to providing safe, quality and cost-effective services to each project we deliver.



www.t1utilitydesign.com

6 Commerce Drive, Suite 200
Reading, PA 19607

For more information
reach out to Jeanne Klein at
jklein@t1utilitydesign.com

Carroll Engineering Corporation

Municipal Engineering - Water Facilities Engineering - Wastewater Engineering -
Civil Engineering - Structural Engineering - Planning & Site Design -
Traffic & Transportation Engineering - Environmental Engineering - Surveying -
Construction Management - Geographic Information Systems



Corporate Office: 949 Easton Road, Warrington, PA 18976 - 215.343.5700

630 Freedom Business Center
Third Floor
King of Prussia, PA 19406
610.489.5100

101 Lindenwood Drive
Suite 225
Malvern, PA 19355
484.875.3075

105 Raider Boulevard
Suite 206
Hillsborough, NJ 08844
908.874.7500

www.carrollengineering.com

Do **YOU** have **GRIT**?
JOIN OUR TEAM!

americancrane.com/jobs

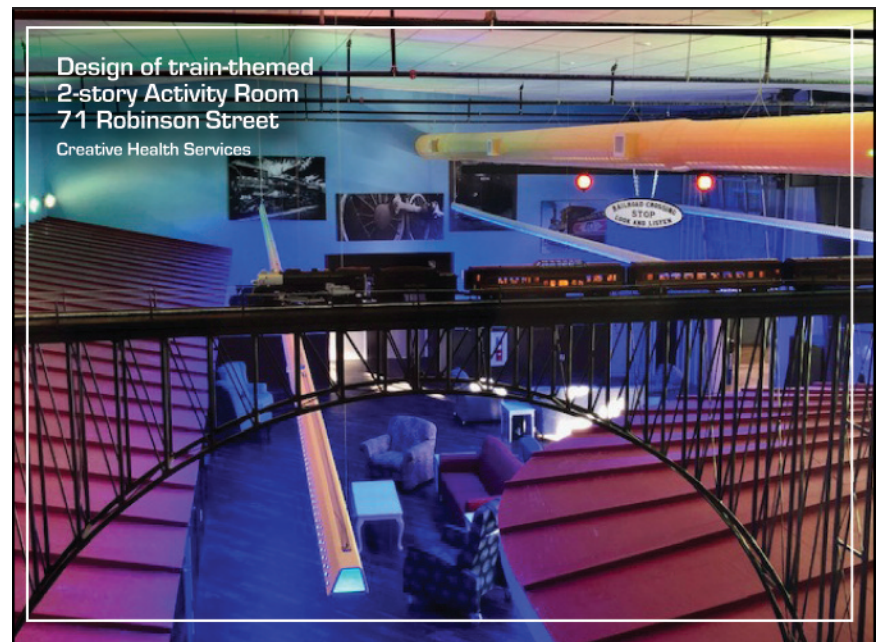
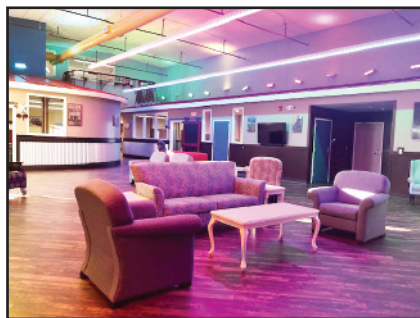


531 Old Swede Road | Douglassville, PA 19518 | 877-877-6778

the adverse experiences that impact their lives. <https://creativehs.org/>

Repeated exposure to one or more adverse experiences can negatively impact brain development, cognitive and neural function, and relationship formation. Trauma awareness is foundational to our services as they help those suffering from depression, anxiety, Substance Use Disorders (SUDs), Opioid Use Disorder (OUDs), Co-Occurring Disorders (CODs), bi-polar disorder and schizophrenia, and any behavioral health issue in between.

Creative Health's services include some of the following: Counseling/Mental Health Outpatient Program, Family Based Services and a Family Center in Collegeville, Career Services Center, Intensive Outpatient Program, Drug & Alcohol Services, Montgomery County Case Management for Children and Adults, Peer Support, Integrated Health Initiative, Tobacco Cessation, Domestic Violence Prevention & Intervention, Anger Management, Police Liaison and Long Term Structured Residence (LTSR) and the new Enhanced Long Term Structured Residence (ELTSR).



Design of train-themed
 2-story Activity Room
 71 Robinson Street
 Creative Health Services

Design. With a pu[®]pose.

*"I'm an architect.
 Thinking outside the box is what I do."*

P. Richard Frantz, AIA
 a[®]rchitect

CALL FOR A COMPLIMENTARY SITE ASSESSMENT!

127 N. HANOVER ST., SUITE A, POTTSTOWN 610.323.0900 • PRF@PRFRANTZ.COM • PRFRANTZ.COM