

**BOOKKEEPING / ACCOUNTING**



**Breslow's Bookkeeping Business**  
 Serving Collegeville and the Surrounding Areas  
 Beth Breslow • 215.272.5217 • bethbreslow@gmail.com  
[www.breslowbookkeeping.com](http://www.breslowbookkeeping.com)

Specialized knowledge as a QuickBooks ProAdvisor helping your business with the following:

- Financial Reporting • Budgeting
- Monthly Bank & Credit Card Reconciliations
- Accounts Receivable & Payables
- Client Invoicing • Payroll Processing

Save Time & Money

Utilizing a Bookkeeper vs. a Full Time Office Employee



**CREDIT CARD PROCESSING**



Call **TODAY** to find out how to keep more money in your business!

**866-677-1608**

Would you like to keep more **PROFIT** of every **Credit Card** sale?



**DJ SERVICES**

**ACCLAIM DJ SERVICES**

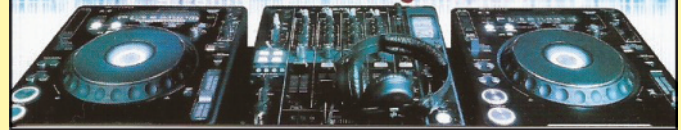
Weddings, Parties, Events, Clubs

For Bookings Call: (484) 455-4635

Website: [acclaimdjservices.com](http://acclaimdjservices.com)

Email: [acclaimdjservices@gmail.com](mailto:acclaimdjservices@gmail.com)

**Let's Get the Party Started!**



**BUSINESS CONSULTANT**



Offering unique proficiencies in technology with a keen focus on the organizational and individual factors.

**Panoptes SOLUTIONS** 610.858.5123

*Assuring Businesses Always Keep an Eye on Success*

[larry.regneth@panoptessolutionspa.com](mailto:larry.regneth@panoptessolutionspa.com)

[www.panoptessolutionspa.com](http://www.panoptessolutionspa.com)

**GARDEN CENTER/NURSERY**

**PUGHTOWN AGWAY**

819 Pughtown Road & Rt. 100, Spring City, PA 19475  
 Located 1/4 mile south of Routes 23 & 100

610-469-9238 Open 8 to 6 M-F, Sat. 8 to 4, Sun. 10 to 3  
 Garden Center (610-469-6688) open every day including Sunday

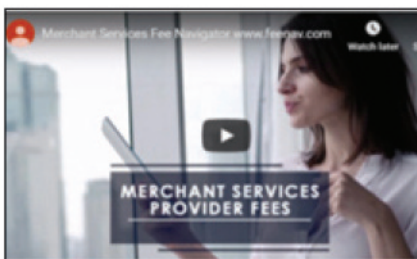
• **Legends, Triple Crown and Buckeye feed lines.**

- Baled Shavings and Bedding Pellets.
- Hay, Straw & Premium Wood Fuel Pellets.
- Organic Chicken Feeds & all kinds of Bird Seed!
- Bulk & Bagged Compost, Soils & Mulches.
- Grass & Pasture Seeds.
- Lime & Organic & Commercial Fertilizers.



**CREDIT CARD PROCESSING**

**Overpaying for Credit Card Processing?**



**MOST SMALL BUSINESSES ARE PAYING EXCESSIVE FEES!**

Drag N Drop your merchant statement... and Done...in 5 seconds, you will know how much you are paying in fees and your rate!

Find Out for Free - Watch Video!

[www.feenav.com](http://www.feenav.com)

**FINANCIAL SERVICES**



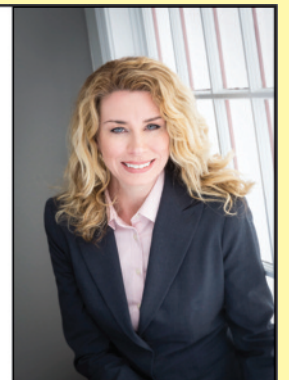
**FINANCIAL STRATEGIES**

You are your #1 asset and we are committed to bringing you more financial security.

Dawn Santoriello, LUTCF • (215) 660-0288

[Dawn@DSFinancialStrategies.com](mailto:Dawn@DSFinancialStrategies.com)

[www.DSFinancialStrategies.com](http://www.DSFinancialStrategies.com)



**FURNITURE**

**Raymour & Flanigan**  
FURNITURE  
MATTRESSES

*Kerry Lee,  
that's me...  
Your Design  
Expert!*

Call for Appointment  
**484-794-9651**  
KerryLee58@yahoo.com



**INTERIOR DECORATING**

**DECORATING DEN  
INTERIORS**

**10% OFF** select blinds  
and shades  
Offer ends 6/29/19



Barbara McInnis-Hayman  
Owner | Decorator  
484.624.4787  
barbaramcinnis@hotmail.com  
barbara.decoratingden.com

**GRAPHIC DESIGN**

advertising & graphic design with a ♥.

LINDA JACOBS  
DOWNTOWN  
**De[z]ign**

228 E. High Street, Pottstown  
484.363.7793  
downtowndezign.com

**LIMOUSINE SERVICE**

Michael's Classic Limousine  
Welcomes Wanish Limousine's  
Customers!

**MICHAEL'S**  
Classic Limousine  
**610.929.4919**  
www.michaelsclassiclimo.com



**GRAPHIC DESIGN & PRINTING**

YOU NAME IT! WE'LL CREATE IT & PRINT IT ...EXCEPT MONEY!

**cgi** COMPLETE  
GRAPHICS  
DIGITAL GRAPHIC SERVICES  
since 1984

**A FULL SERVICE GRAPHIC DESIGN & PRINTING COMPANY**

Digital & Offset Printing - Fliers - Programs - Rack Cards - Post Cards - Brochures - Pocket Folders  
Large Format - Posters - Banners - Yard Signs - Counter Signs - Laminating - Mailings



**38 E. HIGH STREET • POTTSTOWN • 610.327.1780**  
www.complete-graphix.com  
complete.graphix@gmail.com

**HVAC / PLUMBING**

**A. JACKSON ECKER, INC.**  
PLUMBING-HEATING-COOLING



144 KING ST., POTTSTOWN, PA 19464

**(610) 326-5011**

Serving the area for Four Generations Since 1925!

www.ajacksonecker.com

**LODGING / BED & BREAKFAST**

*Twin Turrets Inn*  
BED & BREAKFAST  
*A Delightful Stay is Assured*



My husband, Frank, and I welcome you to  
The Twin Turrets Inn. Our English Springer  
Spaniel, Elizabeth Queen of the Turrets,  
affectionately known as Lizzie, will also  
welcome you with her toy.

*Marianne Deery, Innkeeper*



11 East Philadelphia Avenue • Boyertown, PA 19512

www.TwinTurrets.com



610-367-4513 ~ 1-877-877-7897

# route 422 BUSINESS MARKETPLACE

## LODGING / MEETING FACILITY



430 West Linfield Trappe Road  
Limerick, PA 19468  
P: 610-495-6999  
F: 610-495-6901  
limerick.hamptoninn.com

95 Rooms  
Corporate Amenities  
Indoor Pool / Fitness Center  
Meeting Space Available  
Free Continental Breakfast  
Free WIFI

## ORGANIZATIONS

Need Help for a Business

For Free, Confidential Assistance from Experienced Business Owners and Executives ...

Call on SCORE TriCounty

SCORE TriCounty, serving Western Montgomery, Northern Chester and Eastern Berks counties.

Call 610-237-2673 or visit [tricounty.score.org](http://tricounty.score.org)

We are there for you and your business



## MAINTENANCE/JANITORIAL



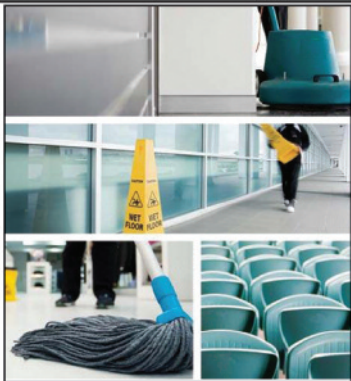
Your cleanliness is our business!

(484) 599-2751

[cleanfloorsandmore.net](http://cleanfloorsandmore.net)

Clean Floors & More specializes in providing janitorial and floor cleaning services to business of all sizes and categories in Berks County!

Email: [cleanfloorsandmore@aol.com](mailto:cleanfloorsandmore@aol.com)



## ORGANIZATIONS

The Pottstown Rotary Club Wants You!



Join us at 6:30 on Wednesday evenings at Brookside Country Club for a delicious meal, camaraderie, and a Rotary meeting where we plan and execute projects to improve the community.

Visit [www.pottstownrotary.org](http://www.pottstownrotary.org) or call Bill Wellen at 484.886.5396 to learn more!



## NAIL SALON & SPA



**Majestic Glamour Nails & Spa**

1126 Town Square Road, Pottstown, PA 19465

267-945-1268

Walk Ins Welcome



Manicure • SPA Pedicure  
Eye Brows • Tinting / Waxing  
Eye Lashes Extension • Nails Art  
Acrylic • 3D Design & Pink White

Monday - Saturday 9 am - 7pm • Sunday 10am - 6pm

## PAINTING & RESTORATION



Schwering Painting & Restoration

**COMMERCIAL RESIDENTIAL**

INTERIOR & EXTERIOR

We Build Relationships!  
Thomas D. Schwering, President

No job is too big or too small

[SchweringPainting.com](http://SchweringPainting.com)

610-222-0112

Cell: 484-744-0628

## REAL ESTATE / FOR SALE/LEASE



Chris James Hector  
ABR, GRI, CRS  
Broker/Owner

Cell: 610-316-3678

[ChrisJamesHector@verizon.net](mailto:ChrisJamesHector@verizon.net)



Chris James Hector Realty



Andrea Heskett  
Realtor

Cell: 610-329-1622

[AndreaHeskett@gmail.com](mailto:AndreaHeskett@gmail.com)



610-933-7592

Fax: 610-933-2888

Office: 213 Sherwood Ln., Phoenixville, PA 19460

Day Spa and Nail Salon

Call for Grand Opening Special!

[www.youdeservetrespa.com](http://www.youdeservetrespa.com)

f /trespasig    i /trenailbar

484-924-9207

420 Schuylkill Road, Phoenixville, PA 19460

**route 422 BUSINESS MARKETPLACE**

**SENIOR CARE / LIVING ASSISTANCE**



Senior Care...only better!

**Senior Helpers Pottstown**  
(serving Western MontCo, Northern ChesCo & parts of Berks)  
**610-323-0460** (24hrs/7days)  
[www.seniorhelpers.com/pottstown](http://www.seniorhelpers.com/pottstown)

- ♥ No minimums – get only the help you need.
- ♥ Personal care - bathing, dressing, toileting & hygiene.
- ♥ Light housekeeping, errands, meal preparation.
- ♥ Hospice support & respite services.

Call today for **FREE** in-home (wherever home may be) consultation!

**SIGNS / BANNERS / GRAPHICS**

Raise Your Business Visibility

**FASTSIGNS**  
More than fast. More than signs.®



180 Shoemaker Rd., Pottstown, PA 19464  
o: 484-624-4874 | e: 566@fastsigns.com | w: fastsigns.com/566

BRANDING COMPANIES WITH A PROFESSIONAL IMAGE SINCE 1992

**GRABER Lettering INC. SIGN CO.**

- ◆ SIGNS & BANNERS
- ◆ TRUCK & VEHICLE LETTERING & WRAPS
- ◆ DIGITAL PRINTED DECALS
- ◆ LOGO DESIGN
- ◆ SCREEN PRINTED TEES
- ◆ EMBROIDERED APPAREL

Visit Our Showroom! 58 Schoolhouse Rd. Boyertown, Pa  
[www.graberletterin.com](http://www.graberletterin.com) **610-369-1112**

**RETAIL / CONSIGNMENT**

**Amy's Attic**  
A CONSIGNMENT STORE  
Brand name apparel, jewelry, furniture, household items, home goods, accessories, games, vintage, collectibles, and more  
Phone: 484-576-2691  
414 DeKalb Street Norristown, PA 19401  
[amysattics.com](http://amysattics.com)

CALL (610) 323-6253 TO PROMOTE YOUR BUSINESS IN THE ROUTE 422 BUSINESS MARKETPLACE



Serving the Tri-County Area

(610) 488-5133 (office) • (610) 743-8606 (fax)  
[contact@lbpropertieservicesllc.com](mailto:contact@lbpropertieservicesllc.com)  
Owners: Lynne and Barry Ernst

**Property Management Tips from LB Property Services**

**Are You at Risk?**

Managing risk in facility use and operations is an integral part of a holistic approach to risk management. Facility risks from a stakeholder's point of view...

For additional information, please contact Lynne and Barry Ernst, LB Property Services, LLC, at: 610.488.5133; email: [contact@lbpropertieservicesllc.com](mailto:contact@lbpropertieservicesllc.com).

The most visible is the day to day use of your buildings...

1. Your staff and their workplace environment should be of primary concern. Poor lighting, uncomfortable chair, or an office that is cold and drafty all can have detrimental effects on productivity.

2. Do you provide ample parking, safe walkways and adequate lighting for those clients, consumers and customers visiting your site? Ensuring exterior and interior entrances are free from debris, doors operate properly, and proper signage is in place is key.

3. What safety and security policies do you have in place for third party vendors and contractors providing on-site services? Policies and procedures concerning material handling, deliveries and work-site safety should be communicated in writing and closely monitored for compliance.

Risk management is not only about the physical attributes of your site. Your overall business logistics and how you communicate health, security and safety issues to all parties working or doing business on your site is crucial in risk management prevention.

Frequent risk management inspections should be performed and, if necessary, a plan of action for immediate remediation of a potential hazard.

**Potts & Penn FAMILY DINER**

Celebrate with friends and family at **OPEN at 7am Daily**

80 High St., Pottstown, PA 484-624-5501

- Best Diner Winner
- Best Breakfast Finalist

Breakfast, Lunch & Dinner Specials  
Meeting & Small Event Facilities Available  
Take Out Available  
Fresh Baked Goods  
Healthy Meal Choices Available

**We have delicious specials like...**

- The Godfather Omlette
- Sausage Gravy of Waffles
- Bonanza Waffle
- Huevos Rancheros
- Country Fried Steak
- Agnes Protein Breakfast
- Surf & Turf Omelette
- Butterscotch Hot Cakes
- Berry Berry Waffle
- Yankee Pot Roast

80 E. High Street  
Pottstown, PA 19464  
**484-624-5501**