

FOCUS ON POTTSTOWN REVITALIZATION

Pottstown So Much More Than a Street



By Peggy Lee Clark, Pottstown Area Economic Development (PAED)

There is a natural interest in what is new and certainly Pottstown continues to provide opportunity for growth and revitalization. However, it is good for us all to think about the business and commerce that goes on every day here in Pottstown. Some of the companies have been part of the community for decades and some are new to the area. Some are familiar names and some of them are unknown but, they are all important to the ongoing success of Pottstown.



Throughout the 5.5 miles of the Borough of Pottstown between January and June 2024 Twenty-two new businesses opened. Here is a sampling of those that have set up shop over the years.

- **Aegis Technologies** is a family owned and operated company located in the Circle of Progress that manufactures pipe fittings for the fire sprinkler industry.

- **Toggle, Inc.** is an innovative company developing hardware, software and providing services to automate the pre-assembly of critical construction materials.

- **Dana Incorporated** – For over 100 years, Dana has been one of Pottstown's largest employers, manufacturing and supplying parts to the passenger and medium and heavy-duty commercial vehicle manufacturers.



Light Up High Street will continue throughout the Downtown blocks of High Street, as PAED works diligently on additional funding opportunities and coordinating with Pottstown's Downtown building owners and businesses. Creating the canopy of lights accomplishes many things. It brings visual appeal to the Downtown and it enhances public safety.

- **Precision Polymer Products** has been manufacturing elastomeric products for the Medical, Automotive, and Electronics and Pharmaceutical Industries since 1984.

- **DJ Pallets** moved to Pottstown for the growth potential it provided in their manufacturing and repairing of wooden pallets for a variety of customers.

- **Helwig Woodworks** specializes in the production of fine custom residential cabinetry and millwork.

- **Grocery Bargain Outlet** is a family owned and operated grocery store that opened in spring 2024, increasing the availability of a variety of food to Pottstown Area Residents and jobs for 33 individuals.

- **VideoRay**, an industry leader in underwater robotics for a variety of missions, is about to celebrate its 25th Anniversary.

In addition to these businesses, High Street continues to expand its food and beverage offerings along with multiple retail stores.

The sum total of old and new is all part of an exciting future for Pottstown.



**POTTSTOWN AREA
ECONOMIC DEVELOPMENT**

POTTSTOWN'S COMMUNITY GIFT E-CARD



app.yiftee.com/gift-card/pottstown#locations
Redeemable at approximately two dozen businesses, with the list growing regularly.

Support Local! Simple to redeem
From \$5 to \$250 Values



A 501(c) 3 Charitable Organization



ANIMAL HOUSE PROJECT

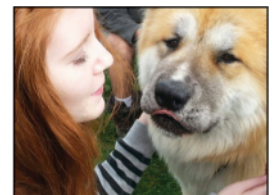
d/b/a Diane's Pet
Supplies & Adoption
Center

1486 Pottstown Pike,
Pottstown Pa 19465

(484) 558-0467



info@animalhouseproject.org
www.animalhouseproject.org



Our mission is to keep pets at home and out of shelters or rescues by providing donated pet food and pet care services to families facing financial crisis in Berks, Chester and western Montgomery Counties.

Stop and see why we have survived and prospered for decades!

Many have come and gone and we are still here taking care of customers.

Sanatoga Corp.

Since 1925
Appliance Specialists

2783 E High St, Pottstown, PA 19464

610-326-9800



We cater to homeowners, businesses, landlords, builders, remodelers.

Sales
Delivery
Installation
Major
Appliance
Experts!

4th Generation family owned & operated- 100 years strong!

Brands We Carry



More Reasons to Pick Pottstown

- Centrally located between Reading, Allentown and King of Prussia, as well as Philadelphia and New York City, with proximity to major highways including Rte. 422, and Rte. 100.

- Industrial history spans centuries and has produced an infrastructure with recent and planned multi-million-dollar renovations, continuing to make the Borough a great location for conducting business in today's global economy.

- Tax Incentives including: Local Economic Revitalization Tax Assistance (LERTA), a 7-year, Borough wide tax abatement on approved properties with completed improvements; Three identified Qualified Opportunity Zones in the Borough of Pottstown offer "deferral of, reduction of, or elimination of future" capital gains taxes to investors.

- Central business district features historic architecture, walkable tree-lined streets and a growing list of shops, restaurants, and bars.

- Diversity of space across the 5.5 miles includes industrial, warehouse, commercial and suburban office parks, in addition to the traditional downtown.

- Arts & Cultural Organizations including Steel River Playhouse, originated in 2001, relocated and re-imagined in 2008 after a \$2.4 million transformation of a 20th century vacant department store into a performing arts center. Montgomery County Community College houses its North Hall Art Gallery in a former 19th Century industrial space that is a work of art in its own right, with exposed brick walls and gleaming wood floors- re-opening in early 2022, featuring an array of art and local artists with exhibits changing throughout the year.

- Proximity to retail shopping including Philadelphia Premium Outlets, Upland Square Shopping Mall, Home Depot, Costco, Giant, Target, Staples, Dicks, Walmart, and the Borough's many specialized Downtown shops such as Agnes Edmunds, Dani Bee Funky, Deliah & Dean Food Market, Enchanted Elements Apothecary, Gypsy Dreaming & Counting Stars, Once Upon a Time Consignment Boutique, The Collective, and more...

- Pottstown Municipal Airport, a general service airport with a 2,700-foot-long runway, owned by the Bor-

ough of Pottstown. Nearby privately-owned Pottstown Limerick Airport has a 3,400-foot-long runway. Philadelphia International Airport is a one-hour drive from Pottstown.

- A Class 1 railroad, Norfolk Southern's Harrisburg Freight line, runs along the Schuylkill River through Pottstown. In recent years, Norfolk Southern has made significant investment in modern intermodal facilities within the Borough. This rail line is double-stack capable, providing more efficient transportation services for Pottstown manufacturers.

- Opportunities to stay overnight, including the 119-room/suite Fairfield Marriott and Three Daughters Inn, a three suite Bed & Breakfast, and Motel 6.

- Pottstown Tower Health Hospital with 232-licensed beds, nearly 400 physicians, specialists and providers, Accredited by the Joint Commission; Accreditation with Commendation by the American College of Surgeons, Commission on Cancer; Certified Primary Stroke Center; Certified in Hip/Knee Replacement; Get with the Guidelines - Stroke Gold Plus Quality Achievement Award (American Heart As-

sociation/American Stroke Association); American College of Cardiology Accreditation Services- Chest Pain.

- Exceptional education institutions including Pottstown High School's Career and Technical Education programs, enabling students to train in state of the art facilities within 10 fields of study; Montgomery County Community College's Pottstown Campus, opened in 1996 as a second campus (Across 2 campuses, MC3 offers 100+ programs, boasts 78,000 graduates and carries an average annual enrollment of approximately 11,000+ students); The Hill School, accredited by the Middle States Association, and the Ten Schools Admission Organization (TSAO) is a private preparatory boarding high school on 200 acres, with students enrolled from 31 states and 31 countries.



FOCUS ON POTTSTOWN REVITALIZATION

Pottstown Tourism & Recreation District

• Pottstown is home to abundant recreational activities at 17 parks/facilities across 118+ acres, within the 5.5 square miles.

• Bike Pottstown (free community bike share program) bikeschuykill.org.

• Carousel at Pottstown (the 2nd oldest working wooden carousel in the U.S. with an impressive story of finding its way to Pottstown).

• Colebrookdale Railroad (18th Century Railroad provides visitors an authentic rail experience across 35 miles of historic, beautiful, geologically unique, and naturally-unspoiled valleys between three counties.) colebrookdalerailroad.com.

• Manatawny Green Mini Golf Course facebook.com/ManatawnyGreen.

• Memorial Park (45+ acre Memorial Park with Veterans' Island, Trilogy BMX & Skatepark, Bark Park dog park, Fountain of Youth Spray Park, Manatawny Green miniature golf) facebook.com/PottstownParksandRec

• Pottsgrove Manor (Pottsgrove Manor, also known as the John Potts House, is an historic, American home located in the Old Pottstown).

• Historic District; added to the National Register of Historic Places in 1974. facebook.com/pottsgrovesmanor.

• Riverfront Park (41+ acre park along the river, and across from the Community College).

• Smith Family Plaza (beautiful, landscaped courtyard with central fountain).

• Schuylkill River Trail (Pottstown offers direct access to the Schuylkill River Trail's 120 miles)



• Schuylkill River Greenway Association INHA & Interpretive Center schuykillriver.org.

• Take-it-Outdoors (boat rentals, Bike Pottstown, shuttle services and educational programming) takeitoutdoorsadventures.com.

Downtown District & Annual Events

Annual celebrations and seasonal activities and events attract thousands of visitors to town, including: Summer Cars Shows, the Schuylkill River Sojourn, Volleyball Rumble (largest in the U.S.!), BMX National Event, Pet Fair, Arts Fest, Holiday Parades, Juneteenth, Go Fourth Festival, Pottstown, Haunts on High, Film Festival, Pottstown FARM, Fete en Blanc, Santa Saturday & Tree Lighting, New Year's Polar Bear Plunge... and many more.



Transform Your Landscape with ChipperTree Service!

- Family-owned and operated.
- Certified arborist.
- Member International Society of Arboriculture.
- Specializing in tree health, removal, and expert pruning.



Don't let your trees be a liability — call ChipperTree Service today for a free consultation and let us help you nurture your green space!

Mention this ad and enjoy 10% off your first service.

(484) 212-1953 • www.chippertreeservicellc.com



Transform Your Landscape with Chipper Tree Service!

Your go-to family-owned and operated certified arborist, we are a proud member of the International Society of Arboriculture with years of experience in enhancing the quality of your trees. Specializing in tree health, removal, and expert pruning, we adhere to the strict safety standards set forth by the Ameri-

can National Standards Institute. Don't let your trees be a liability — call Chipper Tree Service today for a free consultation and let us help you nurture your green space! Mention this ad and enjoy 10% off your first service as a new client. Contact us at (484) 212-1953 or visit www.chippertreeservicellc.com

GROW YOUR CIRCLE & YOUR BUSINESS CONNECTIONS

with amazing women of the Pottstown area!

DONNA MANLEY
POTTSTOWN, PA MANAGING DIRECTOR
ladymanley56@gmail.com
(215) 817-2525

PolkaDotPowerhouse.com



Flip like SIMONE, Breakdance like SUNNY!

We offer classes in ballet, acro, hip-hop and MUCH MORE!

We are still accepting new students!



Pottstown Dance Theatre
Michelle Jones Wurtz, Director
610-323-2569
72 W. Main St., Pottstown PA 19465
www.pottstowndance.com

Ballet and pointe, tap, hip-hop, jazz, modern/contemporary/lyrical, Irish Dance, African Dance, break dance, creative movement, Acro, and Pilates!

Commercial Remodeling Offices • Retail • Apartments

HYDIER BUILDERS, INC.

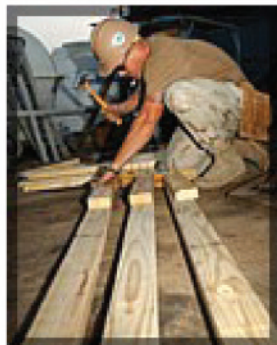
Design • Build • Remodel
Project Management Services

Projects range from single offices
to multi-unit buildings.

Local Contractor Since 1968

Call Brian at 610-724-6104

www.hydiervalders.com



Hydier Builders Residential & Commercial

Hydier Builders has been "Serving friends and neighbors since 1968." That sums up their approach to their business. Service.

If you are looking to build a small addition or a brand-new house, Hydier Builders team up with architects and engineers to get the job done. Need new windows? Need your bathroom remodeled? Is it time for a new room or a new deck? Hydier Builders will make your dreams a reality.

Hydier Builders has years of experience planning, managing, and executing construction projects of all kinds. Their team is professional and reliable, and they will work within your constraints. They always stay on the job until it's done to your satisfaction.

Hydier Builders offers special services for landlords and seniors & accessibility. They understand the desire most people have to stay in their homes despite physical changes that have created barriers to everyday living. Through innovative designs and building techniques, Hydier Builders has been successful in helping many people make the necessary modifications to their homes and restore that feeling of comfort that comes from being home. From bathroom components to wheelchair ramps, they look forward to serving you to support your accessibility needs. They can package a set of affordable services to keep your properties in tip-top shape and save you a lot of aggravation.

Remodeling & Additions

Ready to really expand? Hydier Builders is ready to make it happen for you. For kitchens and baths, Hydier Builders does it all, from making simple repairs and alterations to creating your dream kitchen or bath. You may owe it to yourself to upgrade windows and doors to stop leaks, improve energy efficiency

and improve the appearance of your property. Decades of experience make Hydier Builders a great choice for your roofing and siding work to ensure that you have a quality, trouble-free installation.

When it comes to electrical, plumbing and HVAC, you can count on Hydier Builders for efficient and cost-effective repairs, additions and improvements of electrical wiring and plumbing systems.

Are you considering — or already in the process of — selling your home or other property? Did you know that your house will likely sell much faster — and for a much higher price — if you take the time to fix the existing problems before you try to sell it?

Let's face it... if there are things obviously wrong with your property, potential buyers are likely to have serious concerns about making an offer on it. They are more apt to skip your property entirely, and just move on to the next home on their list. And if they do make an offer... it will surely be for much less than you're asking.

You can significantly shorten the sales cycle and get much higher offers by having a professional contractor check out and fix these issues with your house BEFORE they become issues with your potential buyers. By taking this proactive step and getting your home ready for sale, there will be fewer potential obstacles between you and the offer you want.

So, if you're considering selling your home in the near future, give Hydier Builders a call to check out and remedy any problems so that they don't prevent your house from selling... or prevent you from getting the price you want when you do sell it.

Contact Hydier Builders by calling Brian Hydier direct at: 610.724.6104 and visit www.hydiervalders.com.

Steve's NORTH END MOWER SHOP

POTTSTOWN, PA

610-323-7003

www.stevesmowershop.com



Toro Instant Rebates

up to

\$1,250

Financing
available
W.A.C.



Steve's North End Mower Shop

At Steve's North End Mower Shop, our attention to service and quality has made us an industry leader. At our company, the customer always comes first, and we constantly strive to exceed your expectations.

We service most makes and models of outdoor power equipment. Normal maintenance provided for lawn tractors and zero turns will include a visual inspection for fuel or oil leaks, and the unit will be pressure washed if needed to clean the cooling fins. All fittings will be greased. All cutting and transmission belts, pulleys and cutting spindles will be inspected. The engine oil will be changed and all filters (air, fuel and oil) as well as spark plugs will be replaced. Blades will be sharpened or replaced. The engine RPM's will be checked and adjusted if needed. The transmission oil and filter will be changed on serviceable units. The battery terminals will be cleaned and the battery charged and tested.

We will service any brand or model of outdoor power equipment. Bring your item in or, we can pick it up from your location. Pending your location, local pickups and deliveries are various prices roundtrip. We will quickly prepare a



full diagnosis. There are no hidden fees. Diagnosing small tools takes time. You may decline service after diagnosis, however we require a minimum fee per tool. Your equipment will be returned in diagnosis form - partially or completely deconstructed.

Lawn mower blade sharpenings are available for next day pick up. Chainsaw chain and hedge trimmer sharpenings are available in a timely manner.

Visit www.stevesmowershop.com to get detailed information about us and meet our dedicated staff members. We're looking forward to working with you.

Steve's North End Mower Shop is located at 435 Mangers Mill Road, Pottstown, PA 19464. For additional information please call 610.323.7003.