

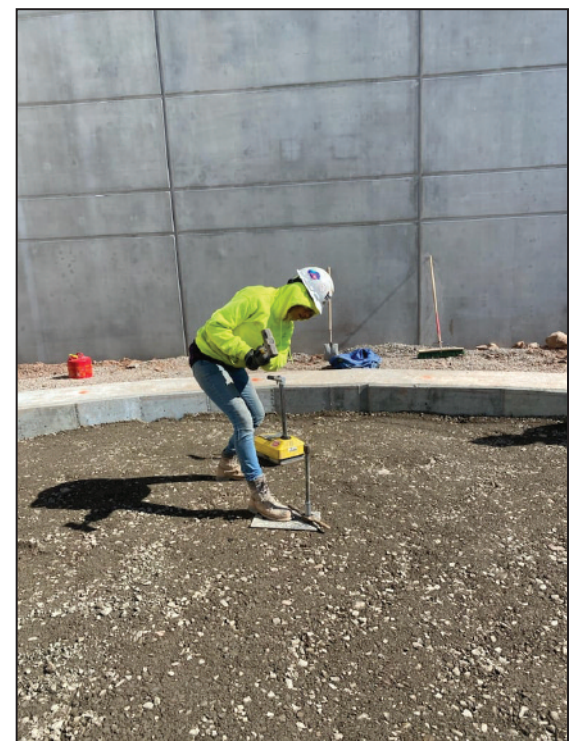
EARTH ENGINEERING INCORPORATED *Geotechnical Engineers & Geologists*

Earth Engineering Incorporated (EEI) takes great pride in being a high-quality full service geotechnical and environmental engineering consulting firm composed of a group of proven engineers, geologists, and scientists. With offices located in East Norriton, Lehigh Valley and Mechanicsburg, Pennsylvania as well as South Jersey, EEI is well positioned to service the entire 422 corridor and surrounding areas. We at EEI are dedicated to providing swift, professional services needed to meet the demands of today's development projects.

Established in Blue Bell, Pennsylvania, EEI began providing client-oriented service in Eastern Pennsylvania, and parts of New Jersey in 1990. Responding to the needs of our clients, EEI opened a satellite office in Turnersville, New Jersey in 1991 which soon grew to a full-service branch office and expanded its facilities to nearby Cherry Hill and then in West Berlin. This office continues to provide a full range of services in the region. EEI expanded westward to meet the needs of clients in the Central PA area with the opening of another full-service branch office. Our Mechanicsburg, Pennsylvania branch was established in 1995 to serve Cumberland, York, Dauphin, Franklin, Lancaster, and neighboring counties. By 2003, after 13 years in the same location, EEI had outgrown its facilities in Blue Bell. Thus, we established our *Corporate Headquarters* located in East Norriton, Pennsylvania. To meet the needs of our clients, in March of 2005 EEI expanded to the Lehigh Valley with the establishment of our office located in Emmaus, PA.



*COST-EFFECTIVE, TOP-QUALITY ENGINEERING
BY PROFESSIONALS WITH 30+ YEARS
OF EXPERIENCE IN THE FIELD*





EEI has specific expertise in Geotechnical Consulting, Subsurface Investigations, Construction Inspections & Testing, Infiltration Testing, Geo-Structural Design, Environmental Site Assessments, and Clean Fill Analysis. The cost-effectiveness of foundation alternatives and geotechnical data are evaluated along with site development issues to establish thorough, mindful recommendations. This approach has enabled EEI to contribute to the successful development of many various types of projects by adding true value to the planning process.

At EEI, our mission is to provide top quality geotechnical and environmental consulting services with a focus on providing best in class services to our clients. We are driven by our core values of reliable, quality driven engineering; on-time, on-budget services with a focus on communication and our client's best interests; honesty, integrity and trustworthiness; and a commitment to building a better community.

It is in the spirit of community that EEI actively sponsors several important causes. These groups include the Committee to Benefit Children for St. Christophers Hospital for Children, Family Promise which helps families with children move from homelessness to self-sufficiency, and Mitzvah Circle which provides crucial essentials to those in need. These are just a few of the programs that EEI regularly sponsors as a way to give back to our community.

A pursuit of excellence and continued commitment to our fundamental principles have proven to be essential in our ability to provide services that help our clients achieve success.



YOUR SUCCESS IS OUR MISSION.

The 422 region is alive and well and the professionals at EEI, many of which who reside along the corridor, are ready to support the progress throughout the area. We at EEI look forward to contributing to the success of your next project. For additional information, please call 610.277.0880 or visit our website www.earthengineering.com.

