

# CELEBRATING NATIONAL ENGINEERS WEEK

FEBRUARY 18-24

## Carroll Engineering Corporation (CEC)

Carroll Engineering Corporation (CEC) proudly announces the commemoration of its five decades of dedicated service throughout the year 2023. As we begin 2024, we express our profound gratitude to our esteemed clientele and dedicated workforce, whose unwavering support and contributions have played a pivotal role in achieving this significant milestone.

Carroll Engineering attributes its enduring success over the past fifty years to its steadfast commitment to cultivating enduring relationships with clients and nurturing the professional growth of its employees.

Established in 1973, Carroll Engineering Corporation has consistently delivered exemplary engineering and surveying services to clients across Pennsylvania, New Jersey, and select parts of Delaware. Our reputation as a preeminent provider of specialized professional services has garnered recognition among diverse

clients, including counties, municipalities, school districts, and public and private entities.

CEC's organizational structure comprises approximately 90 dedicated professionals distributed across nine interconnected departments. Five of these departments focus on distinct engineering disciplines: Municipal, Water/Wastewater, Planning & Site Design, Structural, and Traffic & Transportation Services. The remaining four departments encompass Surveying, Construction Administration & Observation, Geographic Information System (GIS) / Computer-Aided Drafting & Design (CADD), and Administrative functions, all integral in supporting and enhancing our comprehensive suite of engineering services.

In alignment with our commitment to excellence, CEC has embraced cutting-edge technological advancements to



augment our service offerings. The incorporation of state-of-the-art capabilities such as Drone/UAV and 3-D Laser Scanning Services ensures an unparalleled level of data precision and accuracy for the benefit of our esteemed clientele. Our departments collaboratively work together to strengthen our capabilities and cultivate enduring, mutually beneficial relationships.

Strategically headquartered in Warrington, Bucks County, CEC also operates offices in Malvern, Chester County; King of Prussia, Montgomery County; Easton, Northampton County; and Hillsborough, Somerset County, New Jersey. Our Easton, PA office is a newly opened facility, and we are enthusiastic about serving our clients in Northampton

County and the surrounding area. For comprehensive insights into our reputable establishment and the distinguished services we offer, we invite you to explore our official website at [www.carrollengineering.com](http://www.carrollengineering.com). Additionally, engage with us on various social media platforms, including LinkedIn, Facebook, Twitter, and YouTube.

For inquiries regarding adept engineering or surveying support, or if you have questions about CEC, please contact Joel Ardman, Vice President, directly at [jardman@carrollengineering.com](mailto:jardman@carrollengineering.com) or via phone at 215.343.5700 ext. 243. Alternatively, Rachel Skidmore, Business Development Specialist, is available for direct correspondence at [rskidmore@carrollengineering.com](mailto:rskidmore@carrollengineering.com) or by phone at 215.343.5700 x255.



### OUR SERVICES INCLUDE:

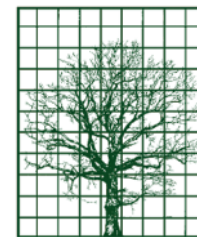
WATER FACILITIES ENGINEERING | WASTEWATER ENGINEERING  
MUNICIPAL ENGINEERING | STRUCTURAL ENGINEERING  
TRAFFIC & TRANSPORTATION ENGINEERING | ENVIRONMENTAL ENGINEERING  
PLANNING & SITE DESIGN | SURVEYING  
CONSTRUCTION PHASE SERVICES | GEOGRAPHIC INFORMATION SYSTEM  
DRONE SERVICES | GRANT SERVICES

WARRINGTON, PA | 215-343-5700  
KING OF PRUSSIA, PA | 610-572-7093  
MALVERN, PA | 610-489-5100  
EASTON, PA | 610-989-4940  
HILLSBOROUGH, NJ | 908-874-7500



## Ludgate Engineering *Engineering for Land Development*

Ludgate Engineering has provided civil engineering for land development since the company was founded by Bob Ludgate Sr. in 1976. Although rules and regulations have changed, the planning process still deals with the several impacts imposed by almost all development plans. While the site civil engineer provides plans to identify and offset or mitigate impacts, the Engineer must do so in a way that does not impede the essential functions the site shall provide,



nor shall the plan compromise the Architect's vision of the development. Each site plan deals with the impacts of traffic management and parking layout. Managing stormwater for drainage and flood prevention often governs the design. Bringing sewer, water, and other utilities to the site can present difficult problems for the Engineer to solve.

Ludgate Engineering Corporation is headquartered at 10 Vanguard Drive, Suite 90, Reading, PA 19606; 610.404.7330.



## Earth Engineering Incorporated (EEI)

Earth Engineering Incorporated (EEI) takes great pride in being a high-quality full service geotechnical and environmental engineering consulting firm composed of a group of proven engineers, geologists, and scientists. With offices located in East Norriton, Lehigh Valley and Mechanicsburg, Pennsylvania as well as South Jersey, EEI is well positioned to service the entire 422 corridor and surrounding areas. We at EEI are dedicated to providing swift, professional services needed to meet the demands of today's development projects.

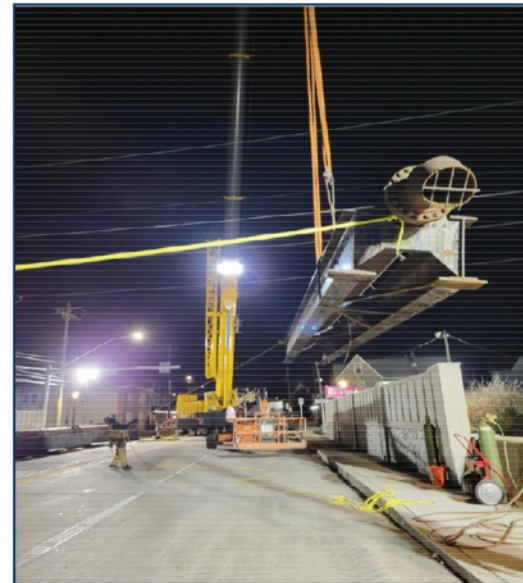
EEI has specific expertise in Geotechnical Consulting, Subsurface Investigations, Construction Inspections & Testing, Infiltration Testing, Geo-Structural Design, Environmental Site Assessments, and Clean Fill Analysis. The cost-effectiveness of foundation alternatives and geotechnical data are evaluated along with site development issues to establish thorough, mindful recommendations. This approach has enabled EEI to contribute to the successful development of many various types of projects by adding true value to the planning process.

At EEI, our mission is to provide top quality geotechnical and environmental consulting services with a focus on providing best in class services to our clients. We are driven by our core values of reliable, quality driven engineering; on-time, on-budget services with a focus on communication and our client's best interests; honesty, integrity and trustworthiness; and a commitment to building a better community.

Your success is our mission. The 422 region is alive and well and the professionals at EEI, many of which who reside along the corridor, are ready to support the progress throughout the area. We at EEI look forward to contributing to the success of your next project. For additional information, please call 610.277.0880 or visit our website [www.earthengineering.com](http://www.earthengineering.com).



YOUR JOBS DON'T STOP AT 5:00 PM



You need a Consultant that works when you do. Witman Engineers is available 24-hours a day, 7-days a week, in all kinds of weather to work with you on construction-related issues.



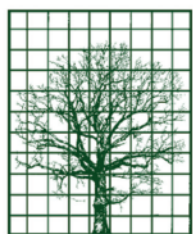
Civil • Structural • Construction

Let us help you get it done.

Phone 610-913-5680

3417 MAIN STREET, PO BOX 742 MORGANTOWN, PA 19543

[info@witmanengineers.com](mailto:info@witmanengineers.com)



Established 1975

**LUDGATE  
ENGINEERING  
CORPORATION**

**ENGINEERS • SURVEYORS • LAND PLANNERS**

**Call 610-404-7330**  
**[www.ludgate-eng.com](http://www.ludgate-eng.com)**

**10 Vanguard Drive, Suite 100, Reading, PA 19606**

# CELEBRATING NATIONAL ENGINEERS WEEK

FEBRUARY 18-24

## Witman Engineers & Consultants, LLC

Witman Engineers, located in Morgantown, Pennsylvania is a full-service Civil Engineering Consultant. While offering a wide range of services, we specialize in Commercial and Industrial Consulting, Construction Consulting to the Transportation Construction Industry and Residential Site Design. We serve all of eastern Pennsylvania, with projects located throughout central and eastern Pennsylvania, but go where our client's need us, even to southern Georgia.

One project of note was provided Field Engineering Services to Neshaminy Constructors, Inc, of Feasterville, PA for the replacement of the Limekiln Pike Bridge over the SEPTA's Lansdale Line. Our work included preparing Structure Demolition and Erection Plans, design of Temporary Excavation Supports, Beam Bracing and Concrete Formwork.

Our staff has designed, Bridges, Culverts and Roadways for the Department of Transportation and Municipal Governments. Industrial clients



have included Montgomery Chemicals in Conshohocken and TIMAC Agro, USA in Reading. We also provide individual lot, Storm Water Management and Erosion Control Plans for residential home builders.



witmanengineers.com

Witman Engineers is a member of The Associated Pennsylvania Constructors and American Road and Transportation Builders Association. We are PennDOT prequalified for Construction Engineering and Construction Surveying. You can learn more about us by visiting [www.witmanengineers.com](http://www.witmanengineers.com).



## EARTH ENGINEERING INCORPORATED

Geotechnical Engineers & Geologists



- Subsurface Investigations
- Geotechnical Design
- Stormwater Infiltration Testing
- Carbonate Site Assessments
- Environmental Site Assessments and Remediation
- Construction Inspection & Testing
- Clean Fill Testing
- Laboratory Soils Testing

[www.earthengineering.com](http://www.earthengineering.com)

Corporate Headquarters: 610-277-0880

Central PA: 717-697-5701

Lehigh Valley: 610-967-4540

South Jersey: 856-768-1001

QUALITY \* COMMITMENT \* PERFORMANCE

## SUPPORT FOR YOUR MOST IMPORTANT ASSETS

with Human Resource support on-demand.

NOW, the region's powerhouse payroll processing partner for small business, Express Data Systems, offers proven comprehensive **HR on-demand** with HR COMPLETE!

**express** DATA SYSTEMS, INC.  
COMPREHENSIVE PAYROLL PROCESSING **610.495.7166** | [EXPRESSDATASYS.COM](http://EXPRESSDATASYS.COM)  
Call now and improve your company HR today!

