

FOCUS ON POTTSTOWN

Pottstown Area Economic Development Highlights Major Development Projects at Pottstown Progress Luncheon

With an audience of nearly 250 members of the business community from across Montgomery, Chester, & Berks counties, Pottstown Area Economic Development (PAED) was pleased to present at the Pottstown Progress Luncheon, hosted by the Tri County Area Chamber of Commerce, and held at the Sunnybrook Ballroom in Pottstown.

This annual event is an opportunity for PAED to highlight major development projects in various phases within the Borough of Pottstown, as well as an opportunity for the business community to network with one another and hear from key leaders. As Peggy Lee-Clark, PAED's Executive Director shared, "This year's theme, FOCUS, is meant to inspire deliberate and cohesive development throughout the Borough."

A captivating video featuring three of Pottstown's most impactful projects, including The Mercury Hotel, Pottstown Sustainable Energy Park (PSEP), and the former Pottstown Plating Works, can be viewed at: <https://www.youtube.com/watch?v=HyNp5BxPORK>.



The afternoon included remarks from Pennsylvania State Senator Bob Mensch, who addressed Pottstown's bright future noting its solid infrastructure and an inspiring entrepreneurial community.

PAED recognized the Montgomery County Redevelopment Authority with an award for their support of Pottstown's



efforts to complete necessary environmental remediation throughout various sites within the Borough. Led by Executive Director, Rebecca Swanson, the RDA is just one of many agencies throughout the County and State working alongside PAED, creating opportunities for Pottstown's economic development, while striving for a new environmental legacy.

Other projects representing Pottstown's progress as a destination for tourism and recreation were featured. Montgomery County Community College (MCCC) is opening its Challenger Learning Center, offering science, technology, engineering, and mathematics (STEM) programs to school-age students. MCCC will also transform its North Hall parking lot into a grass-covered gathering space with tiered rain gardens and native plants. Schuylkill River Greenways NHA welcomes Take It Outdoors, bringing a kayaking outpost to the Montgomery County side of the river. Iron Globe is a multi-faceted entertainment complex, hosting high-profile musical performances, food and beverage venues, and family friendly activities such as ice skating and drive-in movies.

PAED's 2021 annual report was distributed at the event. This annual publication features many key businesses that experienced growth and expansion throughout the year. This year's report also re-intro-

duced PAED's Fall 2021 rebrand, from the "I" for Industrial to the "E" for Economy, a symbolic reflection of the revitalization through innovation and re-imagining Pottstown as a major economic hub in Western Montgomery County.



PAED is a 501(c)(3) non-profit corporation originally formed in 1965 to promote commercial and industrial development in Pottstown, Pennsylvania. PAED provides services to businesses and organizations seeking to invest, expand or relocate including assistance with site selection, commercial and industrial real estate development, access to resources, and workforce development. PAED's efforts stimulate investment, which helps maintain and enhance the tax base, retain and create job opportunities, and restore, utilize or remove under-utilized buildings. From strategic planning, a focus on infrastructure, sustainability, innovation, education, and technology, to hospitality, and tourism, PAED is engaging all aspects of promoting Pottstown as an ideal urban center to live, learn, work and visit. PAED continues to leverage the I Pick Pottstown campaign to create awareness of Pottstown's assets and attract new businesses to the Borough. With its new website, ipickpottstown.org,

For more information about Pottstown Economic Development (PAED), please contact Peggy Lee-Clark, Executive Director at 610.326.2900.

OWM LAW

O'Donnell, Weiss & Mattei, P.C.

Your Life. Your Business. Your Law Firm.

*The OWM Law Business, Banking & Real Estate Team:
James C. Kovaleski, Michael B. Murray, Jr., John A. Koury, Jr., Gary L. Stein,
David A. Megay, Joseph K. Koury*



OWM Business Lawyers handle all phases of Business including Start-up or Purchase, Contract Negotiations, Financing, Employment Issues, Succession Planning & Dissolution. OWM Real Estate Attorneys handle Commercial Development, Residential Transactions, Tax Assessment Appeals, Title Insurance, Municipal, Zoning & Land Use. Whatever your legal needs are, OWM is ready to be part of your team!

Pottstown:
41 E. High Street
Pottstown, PA 19464
610-323-2800

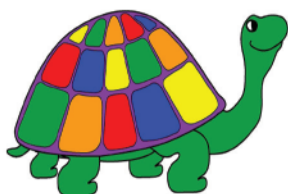


www.owmlaw.com

Phoenixville:
347 Bridge Street, Ste. 200
Phoenixville, PA 19460
610-917-9347

INFANTS • TODDLERS • PRESCHOOL
BEFORE & AFTER SCHOOL • SUMMER CAMPS

Warwick Childcare Center, Inc.



4 WEEKS FREE

New clients are eligible for 1 week free, every 3 months they are enrolled. Not valid with any other offers or on prior registrations.

- Nurturing and experienced staff.
- Small group instruction.
- Individuality.
- Standardized curriculum and assessment.
- Developmentally appropriate lesson plans.
- Partnerships with family and community resources.
- Partnerships with the local school districts to provide a smooth transition from Preschool to Kindergarten.

South Coventry Center
1190 Ridge Road
Pottstown, PA 19465
610.469.0148

North Coventry Center
145 W. Urner Street
Pottstown, PA 19465
610.323.1601

Cedarville Center
16. E. Cedarville Road
Pottstown, PA 19465
610.326.4522

Frazer Center
11 Church Road, Malvern, PA 19355
610.647.1078

Lionville Center
40 S Village Avenue, Exton, PA 19341
610.363.7375

Great Valley Centers
General Wayne and Sugartown:
610.363.8184 ext. 805
Charlestown and K.D. Markley:
610.363.8181 ext. 806

610.363.8184 • www.warwick1.com

Warwick Child Care Center, Inc.

Warwick Child Care Center, Inc. was established in 1986 in Chester County, Pennsylvania and is a private child care center corporation comprised of nine early childhood education centers. Five of the centers provide care for infants through school age children and four of the centers are located within the Great Valley School District elementary schools and provide before and after care as well as summer camp.

The vision of Warwick Child Care Center, Inc. is to provide high quality care in a safe comfortable home like environment. Early Childhood should be a time of fun, warmth, security, exploring and discovery. Each child is unique, creative and receptive. The teachers and staff understand the importance of quality learning experiences and are fun and engaging.

Warwick Child Care provides an atmosphere that encourages social, emotional, physical and intellectual growth through the children's play and small group instruction. These skills lay the foundation for developing literacy, numeracy and other cognitive abilities that are critical for success in school and life. The pandemic has taken a toll on many

children's emotional growth. Warwick Child Care understands the importance of what children have missed out on over the last several years and provides support to help children overcome these new challenges.

The curriculum includes dramatic play, creative art activities, music, science activities, cooking experiences, computer instruction, block play, sand and water experiences, field trips throughout the community, daily outdoor activities and the celebration of birthdays and holidays. Children are exposed to shapes, colors, numbers and letters through developmentally appropriate activities taught using small group instruction.

Warwick Child Care's mission is to provide every child with a high-quality early childhood experience in a safe, nurturing and developmentally appropriate environment. An engaging curriculum with a focus of fostering each child's individualized social, emotional, physical and cognitive development is provided. Our goal is to support families and provide children with the skills to be successful in school and life. High quality child care is offered to children from infancy through elementary years by offering:

TOP 3 IN STOCK DEALS! BEAT INDUSTRY WIDE PRICE INCREASES!



6-PC RECLINING SECTIONAL

Beautiful and functional in durable fabric.
FEATURES: 3 Power Head Recliners and USB Ports

OUR PRICE \$3,399

COMPARE TO \$4,599

SOFA & LOVESEAT

FEATURES: Sturdy Polyester Chenille Fabric, Comfy & Deep Sitting with Accent Pillows

OUR PRICE \$1,599

COMPARE TO \$2,499



6-PC Counter Dining Set

FEATURES: Table, 4 Stools & Bench - Gray & Charcoal Two Tone Finish

OUR PRICE \$999

COMPARE TO \$2,199

visit us at www.lastick.com



We accept most major credit cards

Lastick
FURNITURE & FLOOR COVERINGS

**DOWNTOWN POTTSTOWN
HIGH & CHARLOTTE STREETS
610.323.4000**

Sunday 12 to 5pm • Mon. - Thurs. 10am to 5pm • Fri. 10am to 8pm • Sat. 10am to 5pm

FINANCING AVAILABLE. SEE SALES ASSOCIATE FOR FULL DETAILS

Follow Us



Like Us On



- Nurturing and experienced staff who are educated in early childhood education.
- Small group instruction.
- Standardized curriculum and assessment.
- Developmentally appropriate lesson plans.
- Partnerships with family and community resources.
- Partnerships with the local school districts to provide a smooth transition from Preschool to Kindergarten.

Warwick Child Care Center locations include: South Coventry Center; North Coventry Center; Lionville Center; Frazer Center; Cedarville Center; Great Valley General Wayne Center; and Sugartown Center. Administration Office is located at 300 N. Pottstown Pike, Suite 260. Exton, PA 19341; 610.363.8184. For additional information, please visit: www.warwick1.com.

FOCUS ON POTTSTOWN

Kimmel's Automotive

Kimmel's Automotive, DBA Rob's Auto Repair, is an independent, family-owned auto repair shop serving Pottstown, Morgantown, Boyertown, and surrounding areas. Since 1992, Kimmel's Automotive has been offering individual and commercial clients repairs and services using the most up-to-date, and state-of-the-art technology available ensuring that each vehicle receives the care it deserves. As a trusted name in auto repair and maintenance services for families across the area with a longstanding reputation for quality repairs, the Kimmel's Automotive team is dedicated to providing the best workmanship and customer experience possible.

Kimmel's Automotive is a NAPA AutoCare Center that backs qualifying work through a nationwide warranty. All automotive repair and mechanic services are performed by highly qualified ASE-certified technicians who undergo continuous training to stay up to date on the best repair practices. Kimmel's superior standards ensure that their mechanics always have the best interests of their customers in mind. They work on

numerous vehicles with the use of quality truck and car repair equipment. Whether you drive a passenger car, medium sized truck, mini-van, or SUV, Kimmel's mechanics strive to ensure that your vehicle will be performing at its best before leaving one of its service bays. Kimmel's auto repair shop is capable of servicing a variety of makes and models. Their mechanics to give you a reliable estimate of any automotive repair issue you might be facing.

Kimmel's Automotive offers A/C repair, battery replacement, belt and hose replacement, brake repairs, cooling system services, engine diagnostic and repairs, steering and suspension work, wheel alignments, and much more. They provide a clean and comfortable waiting area with free coffee and Wi-Fi, and Night Key Drop. Hours are Monday through Friday 8:00 AM through 5:00 PM.

Kimmel's Automotive is located at 1055 S Hanover Street, Pottstown, PA 19465. For additional information, please call 610.327.1999 and visit www.kimmelsauto.com.

Whose Turn to Take Out the Trash?

Civic-Minded Businesses Needed to Make "Crucial Impact"

Hobart's Run is seeking additional sponsors for its popular – and impactful – Adopt-a-Trashcan program.

A 501(c)(3) since 2017, the Hobart's Run initiative was established to create a clean and safe neighborhood; foster inclusivity; provide incentives for home ownership and property pride; and generate quality, sustainable commercial and retail development. While specifically addressing an area in Pottstown between North Washington Street on the west and Keim on the east, Hobart's Run also supports Borough-wide revitalization efforts.

To date, 66 "branded" bins have been delivered free of charge throughout the Borough to residents, nonprofit sites, and businesses, directing litter to the cans and away from sidewalks and gutters. Can adopters promise to add the trash to their weekly collection and replace the bags.

The sturdy, attractive receptacles and lids are not inexpensive. Each bin, with its decal and a roll of starter garbage bags, costs about \$200. Fortunately, eight local organizations have stepped up to sponsor one or more cans, receiving recognition through logo-bearing decals Hobart's Run adheres to the funded bins.

Jennifer Davidheiser, of The Real Estate Professionals, sponsored three bins "because it benefits all of us to do our part and keep Pottstown moving in a positive direction," she says, adding, "a clean town is a happy town!"

Thanks to notable community buzz about the effectiveness of this program, Hobart's Run continues to receive pleas for more can placements – which is why it's **actively seeking more sponsorships by local businesses, nonprofits, civic organizations, and individuals.**



**NAPA AutoCare
Center with ASE-certified
technicians on staff!**

**Open Monday
through Friday
8:00 AM - 5:00 PM.**



**Clean and comfortable
waiting area with free
coffee and Wi-Fi.**

**Leave your car
overnight with our
key drop!**

Serving customers in Pottstown, Morgantown, Boyertown, and surrounding areas.

- Axle
- CV Joint & Driveshaft Repair
- Belts & Hoses
- Brake Repair
- Climate Control Systems
- Cooling System Repair
- Differential Repair

- Electrical and Electronic Systems
- Engine Diagnostics and Performance
- Exhaust System Repair
- Four Wheel Drive System
- Glass Repair and Replace
- Lube, Oil & Filter Change
- Preventive Maintenance

- Starting, Charging & Batteries
- Steering and Suspension System
- Tire Pressure Monitoring System (TPMS)
- Tire Services
- Transmission Service & Repair
- Vehicle Inspection
- Wheel Alignment

**1055 S Hanover Street, Pottstown, PA 19465
610.327.1999 • www.kimmelsauto.com**



CENTER FOR ALLIED PSYCHIATRY & PSYCHOLOGY SERVICES

PROVIDING A VARIETY OF MENTAL HEALTH SERVICES INCLUDING MEDICATION MANAGEMENT AND PSYCHOTHERAPY WITH A FOCUS ON TRAUMA INFORMED CARE, SEXUAL AND EMOTIONAL ABUSE, ALCOHOL/SUBSTANCE ABUSE TREATMENTS, CHILDREN AND FAMILY TRAUMA, RAPE, AND WOMEN'S ISSUES.

REACH OUT TO US TODAY!

404 E. HIGH STREET, POTTSTOWN, PA 19464

484.973.6661

Sponsorships ensure the nonprofit can fulfill all bin adoption requests and direct funds toward other Hobart's Run neighborhood improvement initiatives such as façade improvements and safety initiatives, among others.

"It seems like such a small thing, but the collaborative effort of the Adopt-a-Trashcan sponsors helps make Pottstown a more beautiful place to live," says sponsor Meredith Styer Jacks of Styer Real Estate.

Chris Lerch of the 422 SportsPlex is a sponsor "because we understand the appearance of our streets plays an integral role in hometown pride," he states. "Something as simple as a well-positioned trash receptacle can make a crucial impact on maintaining neighborhood cleanliness and changing mindsets."

Dena Reeves of sponsor Deliah & Dean Market, 219 E. High St., has observed that the can they sponsored is constantly full – a good thing overall when one considers the alternative effects of litter on the streets.

"We enjoy finding new ways to give back to the community that has helped us flourish, and through this sponsorship we show we care about keeping Pottstown clean," Reeves says.



"Many Pottstown residents visit our farm each season," notes sponsor Ruth Sitko of Sitko Tree Farms, "so we are happy to support our local community."

Other sponsors to date include Matt Green of Glocker Realty (a super sponsor, with eight bins); Montgomery County Community College (six bins); and the Pottstown Police Officers Association.

Sponsorships are available for single bins for \$200; three for \$500; or six for \$1,000. All information is posted at www.hobartsrunpottstown.org/clean-safe, or email stephanie@hobartsrunpottstown.org.



Hobart's Run is Open for Your Business

Hobart's Run, a neighborhood improvement initiative and 501(c)3 created with support of The Hill School, now offers a Business Incentive Grant!

Qualified new businesses must open in the 500 to 900 blocks of East High Street. Our BIG of up to \$1,500 will help entrepreneurs with their first month's mortgage payment or rent. More information can be found at: hobartsrunpottstown.org/business.

To learn more about Hobart's Run and how we welcome local business development, please email **Twila Fisher**, Executive Director, at twila@hobartsrunpottstown.org, or call

610-780-6324

hobartsrunpottstown.com

Facebook.com/HobartsRun

Instagram.com/HobartsRun

FOCUS ON POTTSTOWN

O'Donnell, Weiss & Mattei, P.C. Introduces New Attorney

The law firm of O'Donnell, Weiss & Mattei, P.C. (OWM), 41 E. High Street, Pottstown, PA, recently announced that Misty A. Toothman, Esquire has joined the firm as an Associate Attorney effective January 3, 2022.



Ms. Toothman received her Bachelor of Science in Communications from Liberty University in 2003, her Master of Arts in American History from the American Military University in 2012 and her Juris Doctor from Villanova School of Law in 2021.

Ms. Toothman is a Chester County native, currently residing in Birdsboro with her husband and 3 children. She has spent the last seven years working in various business positions and the last three years as a licensed insurance agent.

In addition, as her husband is a retired Marine, Misty has been involved in a num-

ber of non-profit organizations that support and advocate for wounded veterans and their families, including the Elizabeth Dole Foundation in Washington D.C.

At OWM, Ms. Toothman will focus her practice on estate planning, estate administration, title insurance and real estate. Ms. Toothman is a member of the Pennsylvania Bar Association. She is also a member of the Montgomery County Bar Association, the Chester County Estate Planning Council, and the Military Spouse J.D. Network.

O'Donnell, Weiss & Mattei, P.C. is a full-service law firm that has been serving the Montgomery, Chester, and Berks County areas for over 65 years. In addition to the Pottstown office, the firm has a Phoenixville office, located at 347 Bridge Street, Phoenixville. Ms. Toothman will be based out of the 41 E. High Street office in Pottstown, however, as with all OWM attorneys, she will be available to assist clients in both our Pottstown and Phoenixville offices. For more information, please contact Misty at 610.323.2800.

CLARK INDUSTRIAL SUPPLY INC.

301 West High Street • Pottstown, PA 19464

610.705.3333

www.clarkindustrialsupply.com



AEROQUIP

- Performance Products
- Hydraulic Hose & Fittings
- A/C Hose & Fittings
- Weatherhead/Brass
- Metric & BSP Fittings
- Industrial Rubber Products

ECCO

- Light Bars
- Flashing Lights
- Back-up Alarms



INDUSTRIAL HARDWARE SUPPLIES

ON SITE EQUIPMENT REPAIR SERVICE

POTTSTOWN AUTO WASH AND DETAIL CENTER



150 Shoemaker Rd, Pottstown, PA 19464

Phone: 610.323.7474

Fax: 610.323.7479

Hours: Monday-Saturday: 8am - 6pm (Summer)

Monday-Saturday: 8am - 5pm (Winter)

Sunday: 9am - 5pm



FULL SERVICE INTERIOR AND EXTERIOR CAR CARE

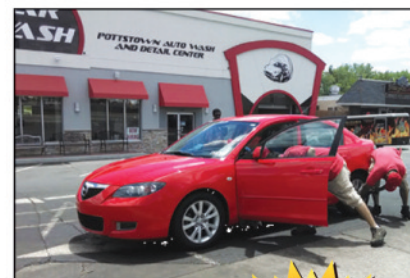


Credit Cards Accepted

- Exterior Car Wash Services
- Full Service with Elite Interior Cleaning
- Express Detail Service
- Full Service Detailing

We Offer Everyday Discounts to our Repeat Customers!

- Frequent Customer Program
- 48 HR Clean Car Guarantee
- Carwash Ticket Books - SAVE\$\$\$
- Various Membership Programs
- Free Birthday Wash (\$12.00 Value)
- Electronic Punch Card
- Gift Cards



**FREE
VACUUMS
Coming
Soon!!!**

www.PottstownAutowash.com